

Program Outcomes

The Program Outcomes are aligned to XIME's Mission and to its Program Educational Objectives. The Program Outcomes are categorized on five key competencies / skills a management graduate should possess and demonstrate at the end of the two-year PGDM program.

Program Outcomes

PO1	Apply knowledge of management theories and practices to solve business problems
PO2	Foster analytical and critical thinking abilities for data-based decision making
PO3	Ability to develop value-based leadership ability
PO4	Ability to understand, analyze and communicate global, economic, legal, and ethical aspects of business
PO5	Ability to lead themselves and others in the achievement of organizational goals, contributing effectively to a team environment

Establish the correlation between the Courses and the Program Outcome

Course and PO Correlation

PO	COURSE	Level of Relevance
PO 1	Managerial Economics	H
PO 1	Marketing I	L
PO 1	Effective Written Communication	L
PO 1	Business, Government, and Society	M
PO 1	Quantitative Techniques I	H
PO 1	Organization Behaviour I	H

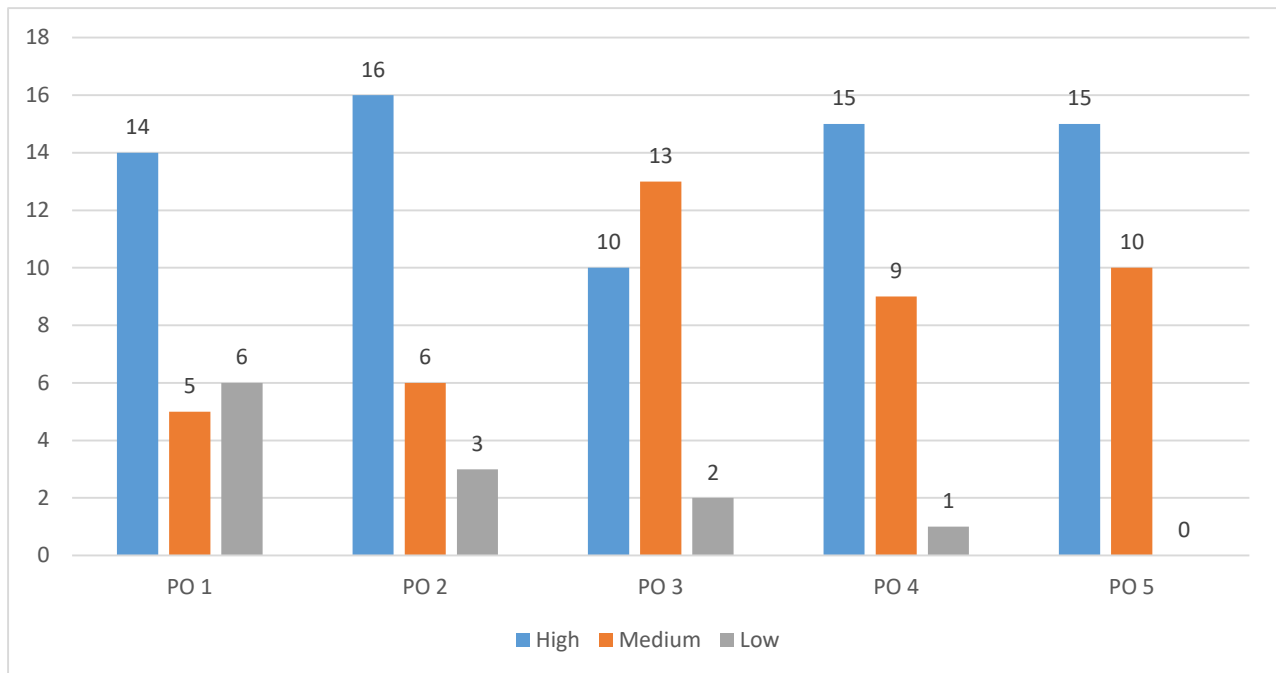
PO 1	Financial Analysis and Reporting	H
PO 1	Learning Circle	M
PO 1	Macro Economics	H
PO 1	Presentation Skills	L
PO 1	Cost & Management Accounting	H
PO 1	Organization Behaviour II	H
PO 1	Marketing II	L
PO 1	Quantitative Techniques II	H
PO 1	Contemporary Business Environment	L
PO 1	Manufacturing Operations	H
PO 1	Accelerated Professional Development	L
PO 1	Research Methodology	H
PO 1	Business Law	H
PO 1	CSR, Environmental Issues & Sustainability	M
PO 1	Business Analytics	H
PO 1	Human Resource Management	M
PO 1	Service Operations	H
PO 1	Managerial Effectiveness	M
PO 1	Corporate Finance	H
PO 2	Managerial Economics	H
PO 2	Marketing I	M
PO 2	Effective Written Communication	L
PO 2	Business, Government and Society	H
PO 2	Quantitative Techniques I	H
PO 2	Organization Behaviour I	H
PO 2	Financial Analysis and Reporting	H
PO 2	Learning Circle	M
PO 2	Macro Economics	H
PO 2	Presentation Skills	L
PO 2	Cost & Management Accounting	H
PO 2	Organization Behaviour II	H

PO 2	Marketing II	M
PO 2	Quantitative Techniques II	H
PO 2	Contemporary Business Environment	M
PO 2	Manufacturing Operations	H
PO 2	Accelerated Professional Development	L
PO 2	Research Methodology	H
PO 2	Business Law	H
PO 2	CSR,Environmental Issues & Sustainability	M
PO 2	Business Analytics	H
PO 2	Human Resource Management	H
PO 2	Service Operations	H
PO 2	Managerial Effectiveness	M
PO 2	Corporate Finance	H
PO 3	Managerial Economics	L
PO 3	Marketing I	M
PO 3	Effective Written Communication	M
PO 3	Business, Government and Society	H
PO 3	Quantitative Techniques I	H
PO 3	Organization Behaviour I	H
PO 3	Financial Analysis and Reporting	M
PO 3	Learning Circle	H
PO 3	Macro Economics	M
PO 3	Presentation Skills	H
PO 3	Cost & Management Accounting	M
PO 3	Organization Behaviour II	H
PO 3	Marketing II	M
PO 3	Quantitative Techniques II	M
PO 3	Contemporary Business Environment	H
PO 3	Manufacturing Operations	M
PO 3	Accelerated Professional Development	H
PO 3	Research Methodology	L

PO 3	Business Law	M
PO 3	CSR, Environmental Issues & Sustainability	M
PO 3	Business Analytics	M
PO 3	Human Resource Management	H
PO 3	Service Operations	M
PO 3	Managerial Effectiveness	H
PO 3	Corporate Finance	M
PO 4	Managerial Economics	H
PO 4	Marketing I	H
PO 4	Effective Written Communication	H
PO 4	Business, Government and Society	H
PO 4	Quantitative Techniques I	L
PO 4	Organization Behaviour I	M
PO 4	Financial Analysis and Reporting	M
PO 4	Learning Circle	H
PO 4	Macro Economics	H
PO 4	Presentation Skills	H
PO 4	Cost & Management Accounting	M
PO 4	Organization Behaviour II	M
PO 4	Marketing II	H
PO 4	Quantitative Techniques II	M
PO 4	Contemporary Business Environment	H
PO 4	Manufacturing Operations	M
PO 4	Accelerated Professional Development	H
PO 4	Research Methodology	M
PO 4	Business Law	H
PO 4	CSR, Environmental Issues & Sustainability	H
PO 4	Business Analytics	M
PO 4	Human Resource Management	H
PO 4	Service Operations	H
PO 4	Managerial Effectiveness	H

PO 4	Corporate Finance	M
PO 5	Managerial Economics	H
PO 5	Marketing I	H
PO 5	Effective Written Communication	M
PO 5	Business, Government and Society	M
PO 5	Quantitative Techniques I	H
PO 5	Organization Behaviour I	H
PO 5	Learning Circle	H
PO 5	Financial Analysis and Reporting	H
PO 5	Macro Economics	M
PO 5	Presentation Skills	M
PO 5	Cost & Management Accounting	H
PO 5	Organization Behaviour II	H
PO 5	Marketing II	H
PO 5	Quantitative Techniques II	M
PO 5	Contemporary Business Environment	M
PO 5	Manufacturing Operations	M
PO 5	Accelerated Professional Development	M
PO 5	Research Methodology	M
PO 5	Business Law	H
PO 5	CSR, Environmental Issues & Sustainability	H
PO 5	Business Analytics	M
PO 5	Human Resource Management	H
PO 5	Service Operations	H
PO 5	Managerial Effectiveness	H
PO 5	Corporate Finance	H

Number of Courses with different levels of Correlation and PO mapping

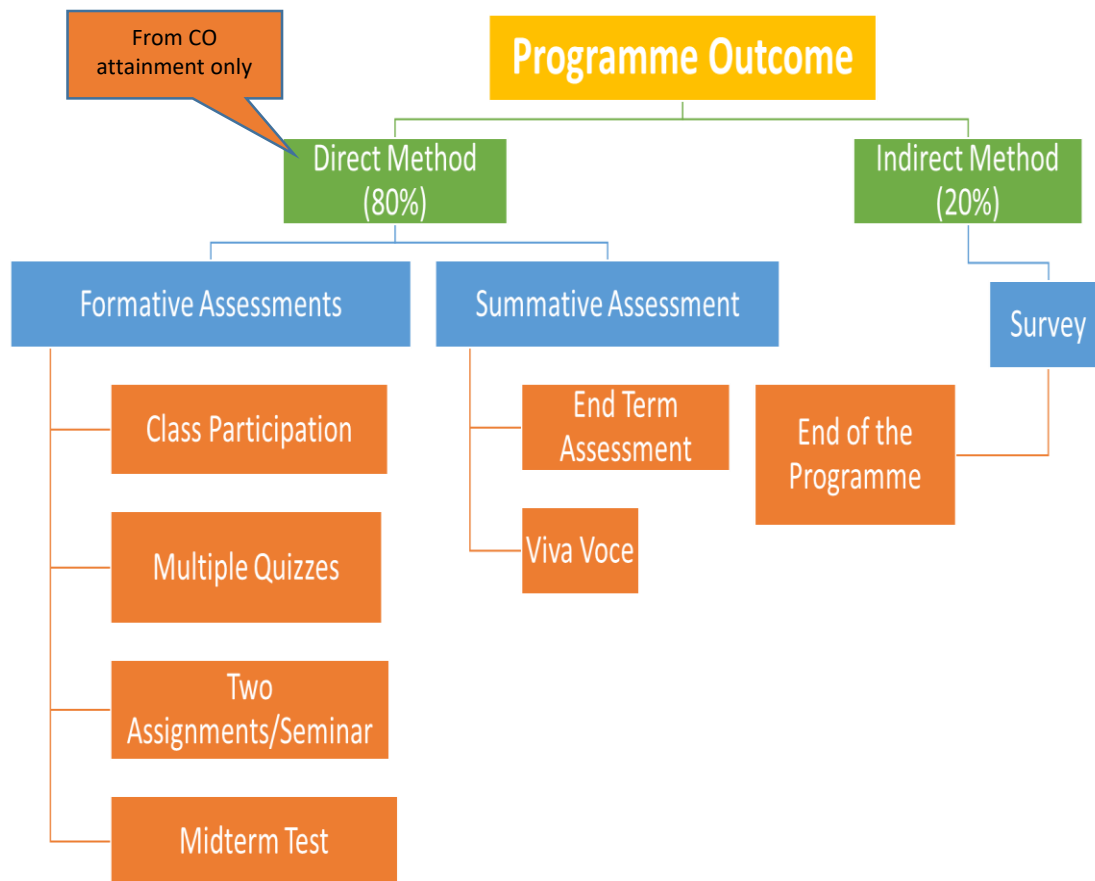


3.1 ATTAINMENT OF PROGRAM OUTCOMES (50)

3.1.1: Describe the assessment tools and processes used to gather the data upon which the evaluation of the program outcome is based. (15)

(Describe the assessment tools and processes used to gather the data upon which the evaluation of each of the Programme Outcomes is based indicating the frequency with which these processes are carried out. Describe the assessment processes that demonstrate the degree to which the Programme Outcomes are attained and document the attainment levels)

The chart below lists the tools and processes used to gather data on Programme Outcome attainment by XIME Bangalore.



1. PO Attainment Calculation

Eighty percent of Program Outcome (PO) attainments were calculated through the mapping of CO to PO. The PO attainment is calculated from the direct assessments of CO attainments. Direct assessment of PO attainment is through formative and a summative assessment of COs. XIME has prepared the remaining 20% PO attainment calculation from the student exit survey conducted by the Institute every year. In the exist survey students give their own perception about the attainment of the POs by them.

PO Direct assessment steps

- Mapping Cos with POs on the basis of strength of correlation.
 - Assign 1 for low, 2 for moderate and 3 for high correlation.
- Not every CO will have correlation every PO.
- All COs which have correlation with any PO are all mapped as stated above
- Calculate each PO attainment of the PGDM programme



PO Indirect assessment

- Student survey on PO attainment



PO attainment for the PGDM programme

- Add direct and indirect attainment in 80:20 ratio

The tables below illustrate how the PO attainment is calculated from the Direct and Indirect Methods together.

PO1 Attainment level (Direct Method) is illustrated below.

Illustration

- CO attainment calculated from the direct assessments are as given in the second column
- The correlations between COs and PO1 are as is given in column three.

Then the attainment of PO1 will be calculated as is shown in column four. The average value is taken as the PO1 attainment through the direct method.

COs	CO Attainment Levels	PO1	
		Degree of Correlation to PO1	Attainment
CO1	1.9	3	$1.9 \times 3/3 = 1.9$
CO2	1.6	2	$1.6 \times 2/3 = 1.06$
CO _n	1.9	1	$1.9 \times 1/3 = .63$
Sum			3.59
Average			$3.59/3 = 1.19$
PO1 Attainment through Direct Method			1.19

Similarly, suppose that PO1 attainment through the Indirect method is = **1.75** (*Outcome of the Exit Survey*) the PO1 attainment from both direct and indirect methods together will be calculated as given below.

PO1 Overall Attainment Calculation

PO overall attainment is measured with the following formula. (Wt. x POn Direct Attainment) + (Wt. POn Indirect Attainment)

PO1 Attainment	Assigned Weightage	Calculated Attainment	PO1 Attainment Calculation	PO1 Attainment
Weighted PO1 Direct Method	0.8 (80%)	1.19	0.8 x 1.19	0.952
PO1 Indirect Method	0.2 (20%)	1.75	0.2 x 1.75	0.350
Overall PO1 Attainment				1.3

Mapping CO to PO

Mapping of COs to POs was done based on the strength of association between the COs and POs. Accordingly, XIME marks this strength at three levels; low, moderate and high and give them values 1, 2, and 3 respectively. The strength of association is assessed by the faculty concerned. The method is to determine the strength of association based on the following formula.

- If > 40% of classroom sessions address a particular PO, it is considered that PO association is at Level 3
- If 25 to 40% of classroom sessions address a particular PO, it is considered that PO association is at Level 2
- If 5 to 25% of classroom sessions address a particular PO, it is considered that PO association is at Level 1

- If there are only < 5% of classroom sessions addressing a particular PO, it is considered that PO is considered not-addressed

The level of association may also be judged by the Faculty and as per the formula given and mapped to the POs.

Gap Analysis and Efforts to Bridge the Gaps

Once the PO attainment of a batch is measured, the IQAC is in charge of examining the gaps in the attainment. The gaps between the attainment and the target is calculated by IQAC. The report on gaps in attainment if any will be send to the Dean Academics who will present it to Area (*Functional Area of Management*) Heads to propose methods to bridge the gap in the coming years. Wherever the target is achieved, an increase in attainment level is proposed based on the PO attainment data of the previous years after due deliberations in the department.

Feedbacks and Curriculum Revision

Informal feedbacks are collected by IQAC from all relevant stakeholders – both from Industry and Academia on knowledge, skills and attitudes of the graduating students and are provided to the Curriculum Revision Committee. The IQAC also provides identified gaps in PO attainment and their insights and findings to the Curriculum Revision Committee. Based on these feedbacks, appropriate modifications will be suggested in the syllabus, extension lectures, industry visits, summer internships, and SUPA. The proposal by the Curriculum Revision Committee is submitted to the Academic Council for evaluation and approval – with or without modification.

3.1.2. POs Attainment Levels (35)

PO attainment levels for the last 3 batches (AYs 2018 to 2022) are listed below.

PO Attainment

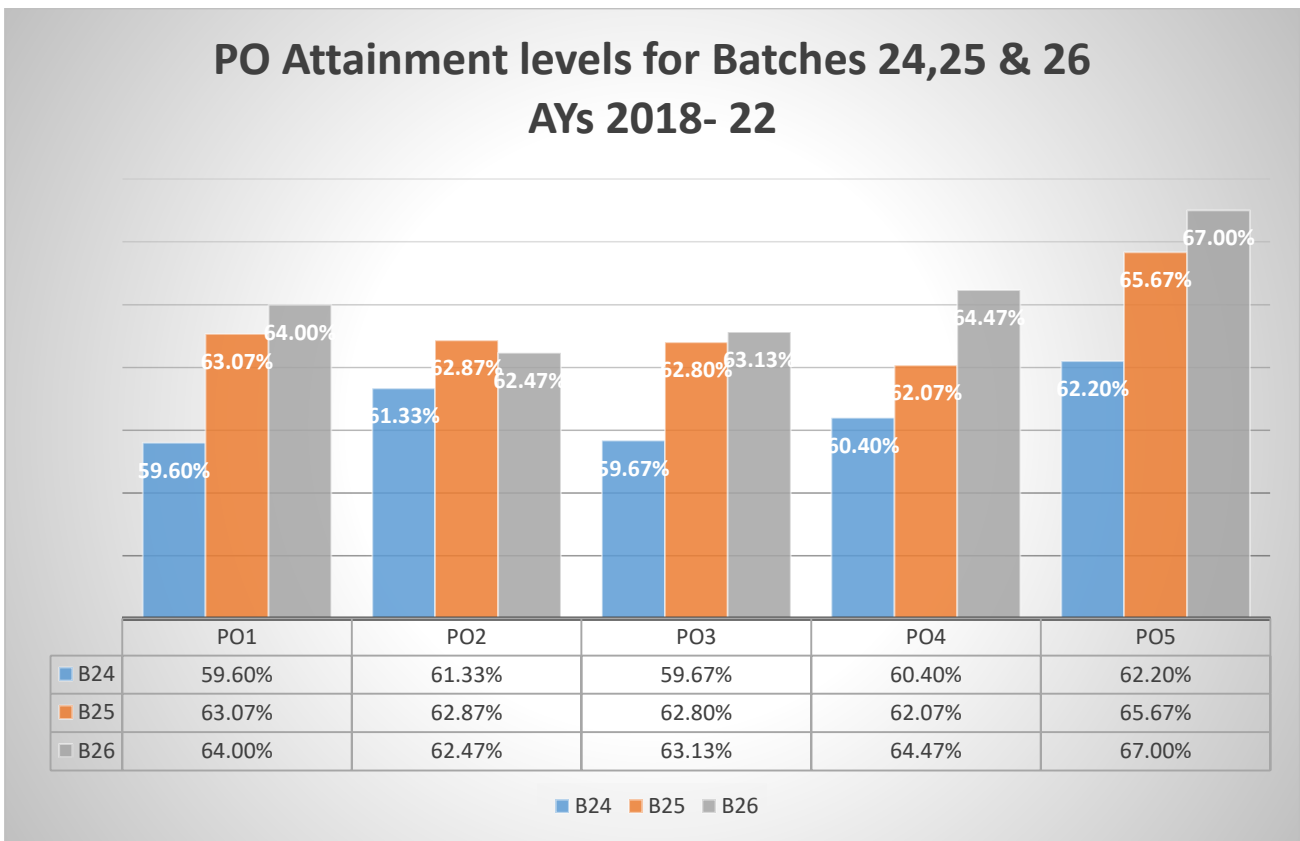
PO attainment is calculated for the entire batch with 80% weightage from direct assessment and 20% from Indirect assessment as per the methodology followed earlier. The table below gives the PO attainment for the Academic years 2018-22.

Direct assessment is 80% of the total value and 20% of weightage is for indirect assessment as explained earlier.

DIRECT ASSESSMENT (80%)					
Batch	PO1	PO2	PO3	PO4	PO5
2018-20, B24	1.42	1.45	1.41	1.42	1.49
2019-21, B25	1.47	1.46	1.46	1.47	1.50
2020-22, B26	1.52	1.49	1.46	1.50	1.54
INDIRECT ASSESSMENT (20%)					
Batch	PO1	PO2	PO3	PO4	PO5
2018-20, B24	0.36	0.39	0.38	0.39	0.38
2019-21, B25	0.42	0.42	0.43	0.39	0.47
2020-22, B26	0.40	0.39	0.43	0.44	0.47
OVARALL ATTAINMENT VALUE					
Batch	PO1	PO2	PO3	PO4	PO5
2018-20, B24	1.79	1.84	1.79	1.81	1.87
2019-21, B25	1.89	1.89	1.88	1.86	1.97
2020-22, B26	1.92	1.87	1.89	1.93	2.01

OVERALL ATTAINMENT (100%)					
Batch	PO1	PO2	PO3	PO4	PO5
2018-20, B24	59.60%	61.33%	59.67%	60.40%	62.20%
2019-21, B25	63.07%	62.87%	62.80%	62.07%	65.67%
2020-22, B26	64.00%	62.47%	63.13%	64.47%	67.00%

PO ATTAINMENT LEVELS (Summary)



NBA Manual Table 3.2 – POs Attainment

BATCH 24 (2018-20) PO Attainment (Direct only)

Course	PO1	PO2	PO3	PO4	PO5
C101	1.50	1.27	1.43	1.43	1.71
C102	1.28	1.24	2.15	1.21	1.41

C103	1.88	1.73	1.43	1.43	1.45
C104	1.53	1.54	1.73	2.60	1.57
C105	1.36	3.00	2.50	3.00	1.67
C106	1.53	1.52	2.60	3.00	3.00
C107	1.88	1.50	3.00	2.38	2.03
C108	1.25	1.25	1.55	1.43	1.55
C201	1.12	1.32	1.85	1.85	1.00
C202	1.24	1.49	2.55	2.55	1.86
C203	2.75	1.81	1.33	2.15	1.54
C204	1.77	1.77	2.04	2.04	2.04
C205	1.58	1.48	1.95	2.75	3.00
C206	1.45	1.29	2.60	1.95	2.50
C207	1.86	1.86	2.50	1.58	2.50
C208	1.90	1.64	1.58	1.50	1.62
C301	1.37	1.52	2.35	1.85	2.35
C302	1.36	1.72	2.13	2.00	1.48
C303	1.68	1.85	1.46	2.38	2.08
C304	2.43	2.15	1.65	1.34	1.49
C305	2.13	2.13	1.74	1.65	1.95
C306	2.17	2.17	2.00	2.00	2.15
C307	2.18	1.86	1.53	1.20	2.60
C308	1.56	1.60	1.67	1.23	1.35
C401	1.75	1.89	1.58	2.07	2.75
C402	2.19	2.19	2.00	1.90	2.50
C403	1.73	1.48	2.15	1.98	2.33
C404	1.69	1.62	1.55	1.55	2.50
C405	1.60	1.73	1.60	1.42	1.49
C406	1.51	1.70	1.72	1.29	1.45
C407	1.93	1.99	1.59	2.50	2.50
C408	2.00	2.24	2.00	2.00	2.15
C409	1.60	1.68	1.66	1.72	1.76
C410	2.00	2.74	2.00	2.49	1.99
C411	1.06	1.44	1.56	1.50	1.37
C412	2.75	2.75	2.00	2.50	1.78
C413	1.33	1.79	1.35	1.73	1.43
C414	3.00	3.00	2.00	2.00	2.15
C415	1.52	3.00	2.00	2.06	1.82
C416	2.10	2.10	2.00	1.41	1.82
C417	1.32	1.51	0.91	2.30	1.59
C418	1.56	2.17	1.80	1.28	1.77
C419	1.48	1.88	2.15	1.11	1.70
C420	2.00	1.88	1.57	1.38	2.10
C421	2.00	2.50	1.52	1.24	1.90
C422	2.00	2.50	1.48	1.11	1.70
C501	1.42	1.89	2.34	2.00	1.35

C502	2.40	2.33	1.20	2.07	1.70
C503	1.95	1.97	1.47	2.60	1.28
C504	2.83	1.95	2.00	1.30	1.30
C505	1.76	3.00	1.49	1.56	2.20
C506	0.89	0.72	1.00	0.78	0.66
C507	1.28	1.53	1.99	1.99	1.95
C508	2.24	1.77	2.15	1.43	1.65
C509	1.44	1.82	1.23	2.60	1.46
C510	1.23	1.70	2.20	1.48	1.27
C511	1.40	1.43	1.86	1.41	1.70
C512	2.16	2.09	1.88	1.74	1.54
C513	1.41	1.41	2.65	1.48	1.40
C514	2.33	2.48	2.50	2.00	1.60
C515	1.35	1.68	1.32	1.94	1.53
C516	1.77	2.26	1.88	1.77	1.48
C517	2.01	1.63	2.60	1.83	2.60
C518	2.20	1.90	1.38	1.49	2.10
C519	1.79	1.58	1.36	1.41	1.44
C520	3.00	2.65	1.65	1.15	1.77
C601	0.89	0.81	0.66	0.43	0.55
C602	1.94	1.69	1.36	1.46	1.53
C603	1.41	1.08	0.95	1.32	2.20
C604	1.38	1.37	1.33	2.50	2.50
C605	1.99	1.66	1.98	1.41	2.33
C606	2.50	1.41	0.98	1.54	2.18
C607	1.40	1.09	1.08	1.17	1.80
C608	1.24	1.36	0.99	1.68	1.27
C609	2.50	1.55	1.52	2.48	3.00
C610	2.32	2.04	3.00	2.00	3.00
C611	1.68	1.02	1.30	1.67	1.68
C612	1.53	2.60	1.38	1.38	2.60
C613	2.15	2.15	2.00	2.50	1.77
C614	1.87	1.36	1.05	2.07	2.35
C615	1.45	1.29	1.18	1.40	1.37
AVERAGE	1.78	1.81	1.76	1.78	1.86

PO attainment is calculated for the 2018-20 batch with 80% weightage from direct assessment and 20% from Indirect assessment. Table below gives the PO attainment for Academic year 2018-20

PO Attainment for 2018-20 (Direct + Indirect)

Method	PO1	PO2	PO3	PO4	PO5
80% of Direct	1.42	1.45	1.41	1.42	1.49
20% of Indirect	0.36	0.39	0.38	0.39	0.38
Total	1.79	1.84	1.79	1.81	1.87
In %	59.60%	61.33%	59.67%	60.40%	62.20%

BATCH 25 (2019-21) PO Attainment

Course	PO1	PO2	PO3	PO4	PO5
C101	1.55	1.13	2.00	1.92	2.33
C102	1.22	1.33	1.40	1.23	2.10
C103	1.46	1.33	2.10	1.10	1.40
C104	1.08	0.94	1.78	0.94	0.79
C105	2.11	1.83	1.90	2.33	2.21
C106	1.95	1.95	2.15	2.50	2.15
C107	1.84	1.84	1.82	1.93	1.47
C108	1.69	1.37	1.83	2.33	1.95
C201	1.77	1.77	2.13	2.13	2.13
C202	1.48	1.73	2.35	2.35	1.85
C203	1.87	1.52	2.00	1.47	2.15
C204	1.75	1.54	1.23	1.58	1.34
C205	1.65	1.52	1.23	1.48	1.24
C206	1.99	1.64	1.71	2.00	2.33
C207	1.04	1.19	1.14	1.30	1.54
C208	2.75	2.56	1.33	2.10	2.00
C301	1.75	1.79	1.08	1.64	1.67
C302	1.16	1.15	1.13	1.13	0.63
C303	2.57	2.28	2.42	2.00	2.15
C304	1.37	1.73	1.88	2.40	2.33
C305	2.11	1.88	2.00	2.42	2.42
C306	1.85	1.85	1.83	1.40	1.45
C307	2.05	2.05	1.83	2.00	2.07
C308	1.41	1.17	1.54	1.53	1.55
C309	2.92	2.51	1.65	1.43	2.20
C401	1.91	1.58	2.34	2.14	2.42
C402	1.88	2.05	1.30	2.15	1.83
C403	2.00	2.74	1.77	2.74	2.74
C404	2.43	2.04	2.15	2.00	2.40
C405	2.14	1.77	2.07	1.74	1.76
C406	1.83	1.83	1.30	1.27	1.40

C407	2.14	2.19	2.20	2.20	2.30
C408	1.66	1.70	1.92	1.70	1.66
C409	1.89	1.89	2.00	0.97	1.32
C410	2.03	2.00	2.00	2.22	2.10
C411	1.75	1.88	2.15	1.74	2.50
C412	3.00	3.00	2.00	2.50	2.15
C413	1.43	1.38	2.20	1.47	0.94
C414	1.44	1.85	1.47	1.68	2.08
C415	1.08	0.86	1.49	1.07	0.99
C416	2.00	1.88	1.57	1.90	2.15
C417	2.10	2.10	1.65	2.00	2.00
C418	1.48	2.06	1.66	1.52	2.15
C419	1.35	1.40	1.54	1.92	2.02
C420	1.27	1.61	1.65	1.74	1.74
C421	1.95	2.35	1.47	2.20	1.73
C501	1.68	1.68	2.00	1.71	1.75
C502	2.35	2.43	1.98	2.01	2.12
C503	2.41	2.49	2.02	2.06	2.17
C504	1.50	1.59	1.27	1.35	1.41
C505	2.20	2.48	2.50	2.50	1.15
C506	1.83	2.28	2.50	2.50	1.32
C507	2.24	1.77	2.15	2.00	1.65
C508	2.24	1.77	2.15	2.00	1.65
C509	1.42	1.89	2.40	2.00	1.48
C510	2.68	2.00	2.03	2.03	2.00
C511	1.81	1.90	1.72	2.15	1.61
C512	1.48	2.13	1.87	1.98	1.70
C513	1.19	1.38	1.81	1.92	2.34
C514	2.00	2.61	2.00	1.74	1.74
C515	1.30	1.55	1.78	1.78	2.68
C516	1.88	1.71	1.60	1.47	1.58
C517	1.50	1.44	1.18	1.45	1.06
C601	2.32	1.90	2.00	2.00	2.15
C602	2.40	2.02	1.58	2.02	2.35
C603	1.37	2.22	2.10	2.00	1.88
C604	1.65	1.13	2.50	1.43	2.22
C605	1.79	2.14	1.46	1.45	2.00
C606	1.99	1.99	2.15	1.55	1.77
C607	1.52	1.46	1.48	1.95	1.98
C608	1.75	3.00	2.48	1.76	2.50
C609	2.25	1.55	2.03	1.65	2.48
C610	1.90	2.15	2.00	1.55	1.77
C611	1.80	1.53	1.66	1.47	1.50
C612	1.67	1.72	1.90	1.74	1.45

C613	2.00	1.88	1.48	1.74	1.70
C614	2.00	1.83	1.48	1.74	1.70
C615	1.92	2.22	1.50	2.02	2.00
C616	1.22	1.46	1.92	2.42	1.83
C617	2.22	1.47	1.81	2.04	2.48
C618	2.40	1.36	1.27	1.93	2.35
AVERAGE	1.84	1.83	1.82	1.84	1.87

PO Attainment 2019-21 (Batch 26)

PO attainment is calculated for the 2019-21 batch with 80% weightage from direct assessment and 20% from Indirect assessment. Table below gives the PO attainment for Academic year 2019-21

PO Attainment 2019-21 (Direct + Indirect)

Method	PO1	PO2	PO3	PO4	PO5
80% of Direct	1.47	1.46	1.46	1.47	1.50
20% of Indirect	0.42	0.42	0.43	0.39	0.47
Total	1.89	1.89	1.88	1.86	1.97
In %	63.07%	62.87%	62.80%	62.07%	65.67%

BATCH 26 (2020-22)– PO Attainment

Course	PO1	PO2	PO3	PO4	PO5
C101	2.33	2.15	1.69	2.07	1.51
C102	1.25	1.05	1.38	1.14	1.38
C103	1.83	1.64	1.90	1.67	2.21
C104	1.97	1.95	2.15	2.00	1.48
C105	1.43	1.41	2.10	1.85	2.10
C106	1.90	1.58	1.95	2.02	2.48
C107	1.62	1.62	1.82	2.15	2.48
C108	2.61	2.40	1.80	2.15	1.57
C201	1.82	1.82	1.75	1.20	1.90
C202	1.94	1.74	1.95	2.09	1.84
C203	1.81	1.85	2.00	1.71	1.30
C204	1.06	1.60	1.38	1.63	1.05

C205	1.77	1.69	2.00	2.00	1.95
C206	1.05	1.36	1.95	1.95	1.70
C207	1.49	2.13	1.68	1.35	2.20
C208	1.97	2.24	1.83	2.32	2.00
C301	1.73	1.32	1.66	1.83	1.98
C302	1.30	1.38	1.42	1.42	1.70
C303	2.14	1.91	1.70	2.00	1.95
C304	1.49	1.73	1.64	1.73	2.50
C305	1.91	2.21	2.00	1.58	1.83
C306	1.57	1.85	1.83	1.86	2.10
C307	2.26	1.88	2.42	2.42	2.29
C308	1.20	1.55	1.54	1.53	1.53
C401	2.29	2.51	1.65	1.43	1.82
C402	2.05	1.94	1.77	1.52	1.95
C403	1.16	1.57	1.67	1.55	1.65
C404	1.89	1.89	1.48	2.25	1.83
C405	1.74	2.08	1.77	1.52	1.95
C406	1.93	1.93	1.67	1.73	1.57
C407	2.00	2.49	1.88	1.60	1.58
C408	1.55	1.76	2.18	1.78	1.78
C409	2.03	2.11	1.83	1.83	2.05
C410	2.08	2.00	1.60	2.35	1.70
C411	2.17	2.02	2.00	1.69	1.65
C412	1.79	2.07	2.19	2.05	2.19
C413	1.82	1.54	1.80	2.75	2.32
C414	1.70	1.46	1.54	2.08	2.05
C415	1.55	1.43	1.45	1.55	1.93
C416	1.79	2.24	1.38	1.70	1.45
C501	1.95	1.95	2.00	1.98	2.15
C502	2.16	2.30	1.88	1.93	2.12
C503	2.03	2.11	1.75	1.78	1.97
C504	2.33	2.49	2.02	2.04	2.27
C505	1.29	1.45	1.67	1.67	1.69
C506	1.72	1.69	2.25	2.22	1.98
C507	2.15	1.77	2.15	1.94	1.95
C508	2.15	1.77	2.15	1.94	1.95
C509	1.42	1.89	2.40	2.00	1.48
C510	2.55	1.83	1.93	1.95	1.83
C511	1.64	1.45	1.58	1.94	1.47
C512	1.44	1.98	1.62	1.91	2.00
C513	1.78	1.53	1.99	1.99	2.61
C514	2.00	2.12	2.50	1.95	2.24
C515	2.03	1.78	1.99	1.99	2.61
C516	2.26	2.20	1.77	2.15	1.98

C517	1.76	1.76	1.95	1.93	2.55
C518	2.16	1.92	1.92	2.03	2.28
C519	1.23	1.26	1.60	1.52	1.60
C520	2.00	1.95	2.50	2.67	2.32
C521	2.39	1.69	1.80	1.84	2.33
C522	2.33	2.49	2.07	2.15	2.43
C601	2.18	2.01	1.70	2.13	1.98
C602	2.02	2.02	2.02	2.02	2.02
C603	1.92	2.15	1.47	1.64	1.57
C604	1.85	2.28	2.05	1.80	2.12
C605	2.17	1.74	1.69	1.73	1.97
C606	1.65	1.58	2.05	1.50	1.34
C607	2.49	2.10	1.40	1.60	1.38
C608	2.40	1.44	1.92	1.96	2.18
C609	1.59	1.55	1.44	1.78	1.98
C610	2.24	1.64	2.05	2.05	2.09
C611	2.44	2.07	1.51	1.70	1.58
C612	1.99	1.65	1.92	1.97	1.97
C613	2.05	2.40	1.44	1.40	1.78
C614	2.16	2.01	2.24	2.24	2.05
C615	2.38	2.17	1.52	1.70	1.70
C616	2.35	1.55	1.79	2.09	1.78
C617	2.28	1.63	1.57	1.37	1.51
C618	2.02	2.02	2.02	2.02	2.02
AVERAGE	1.90	1.86	1.83	1.87	1.92

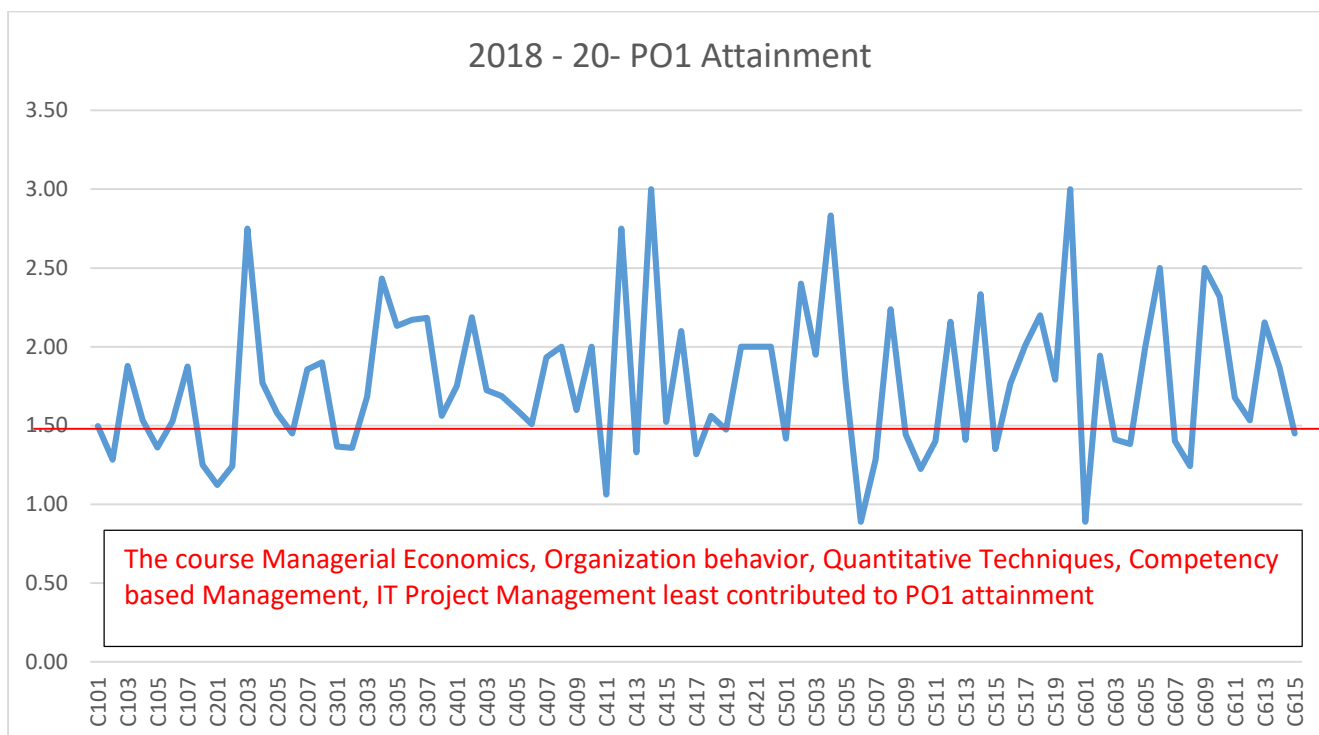
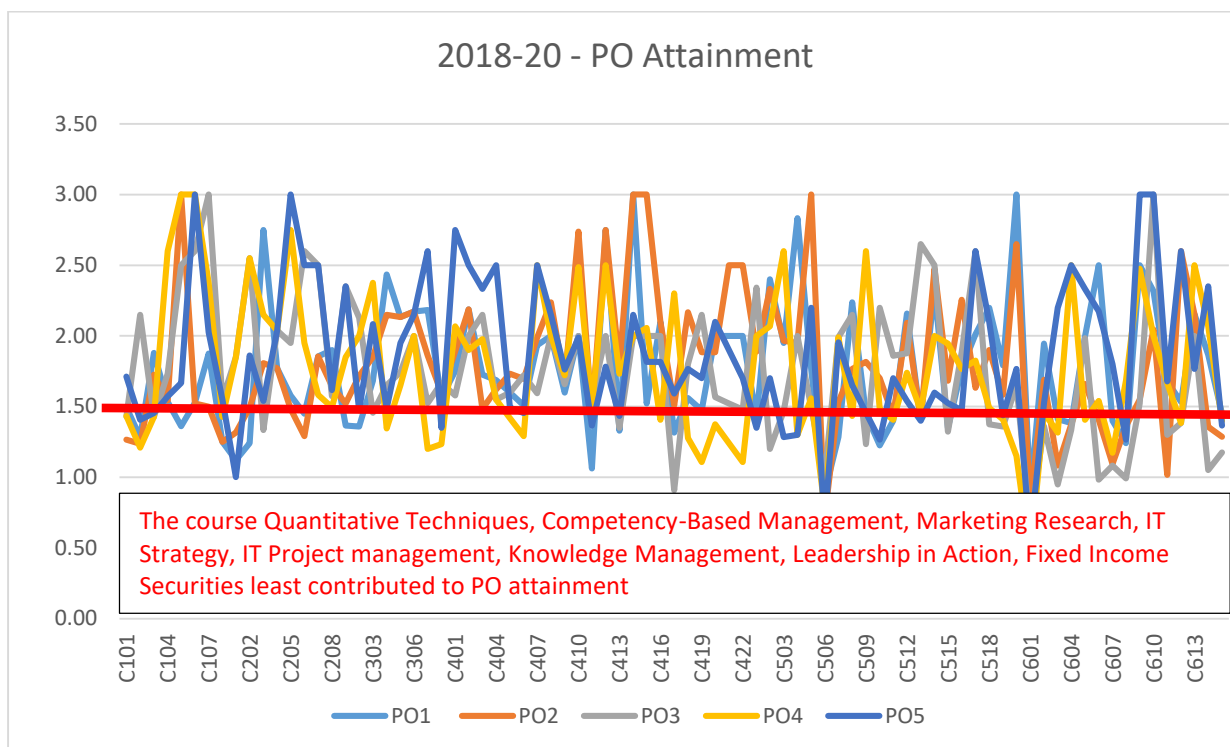
PO Attainment 2020-22 (Batch 26)

PO attainment is calculated for the 2020-22 batch with 80% weightage from direct assessment and 20% from Indirect assessment. Table below gives the PO attainment for Academic year 2020-22.

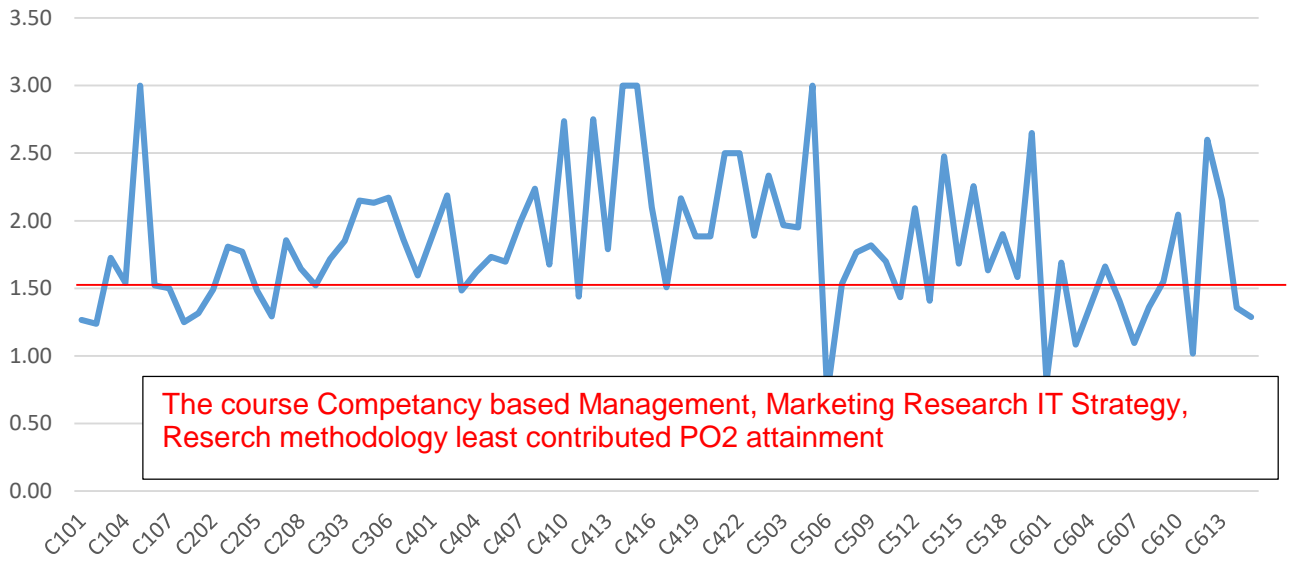
PO Attainment 2020-22 (Direct + Indirect)

Method	PO1	PO2	PO3	PO4	PO5
80% of Direct	1.52	1.49	1.46	1.50	1.54
20% of Indirect	0.40	0.39	0.43	0.44	0.47
Total	1.92	1.87	1.89	1.93	2.01
In %	64.00%	62.47%	63.13%	64.47%	67.00%

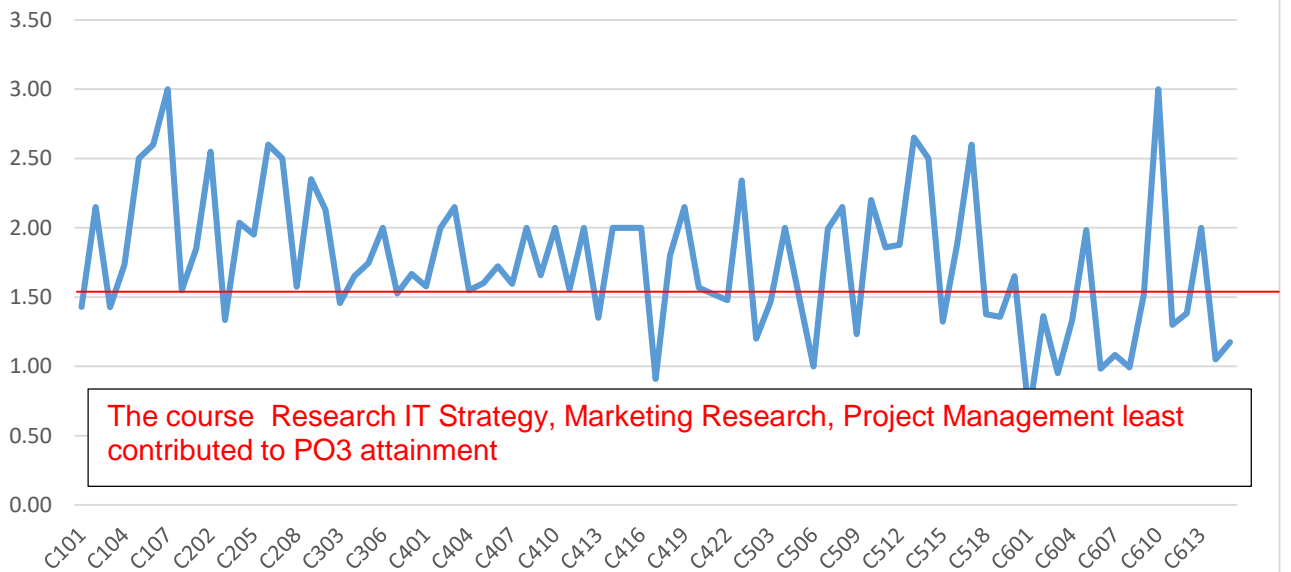
PO Attainment Analysis - 2018-20 Academic Year

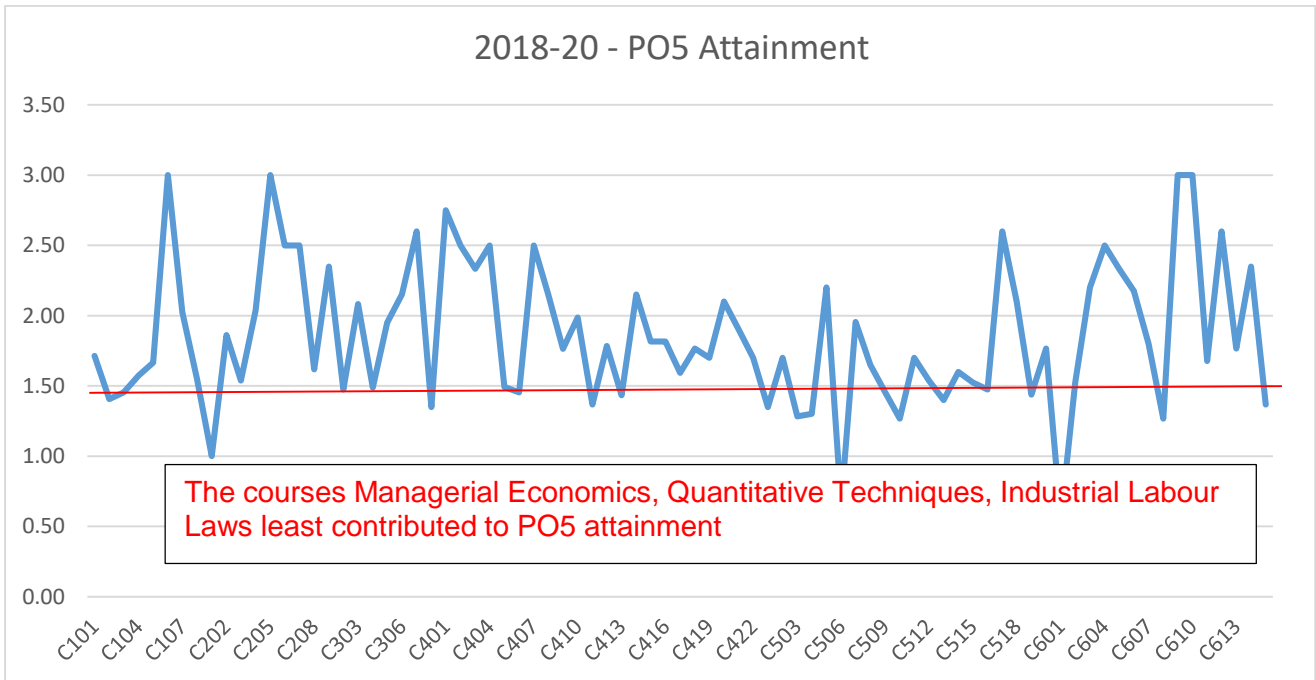
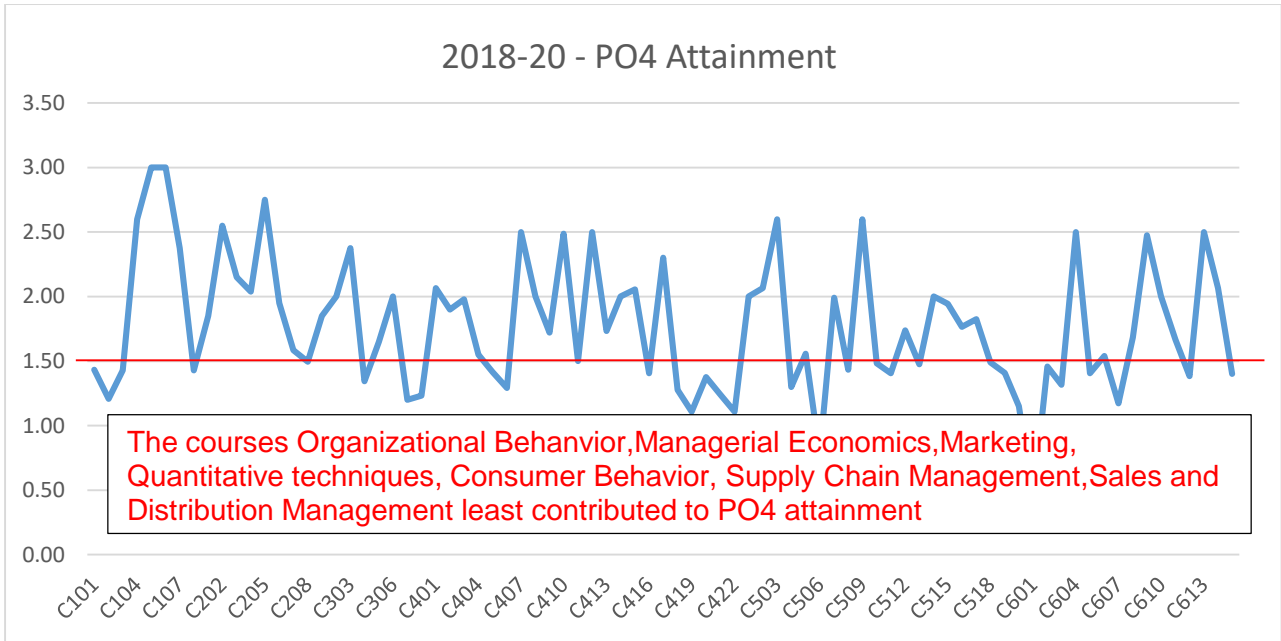


2018-20 - PO2 Attainment



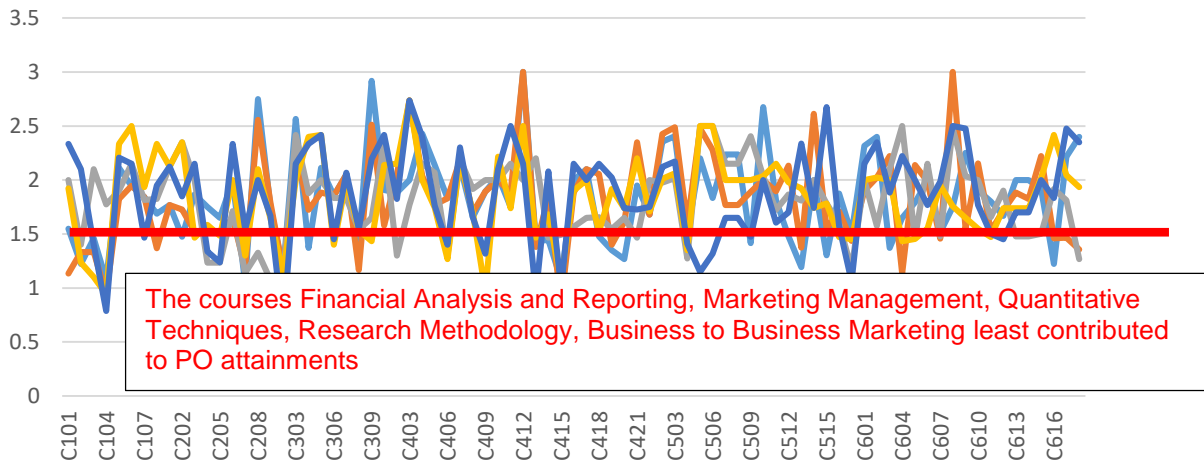
2018-20-PO3 Attainment



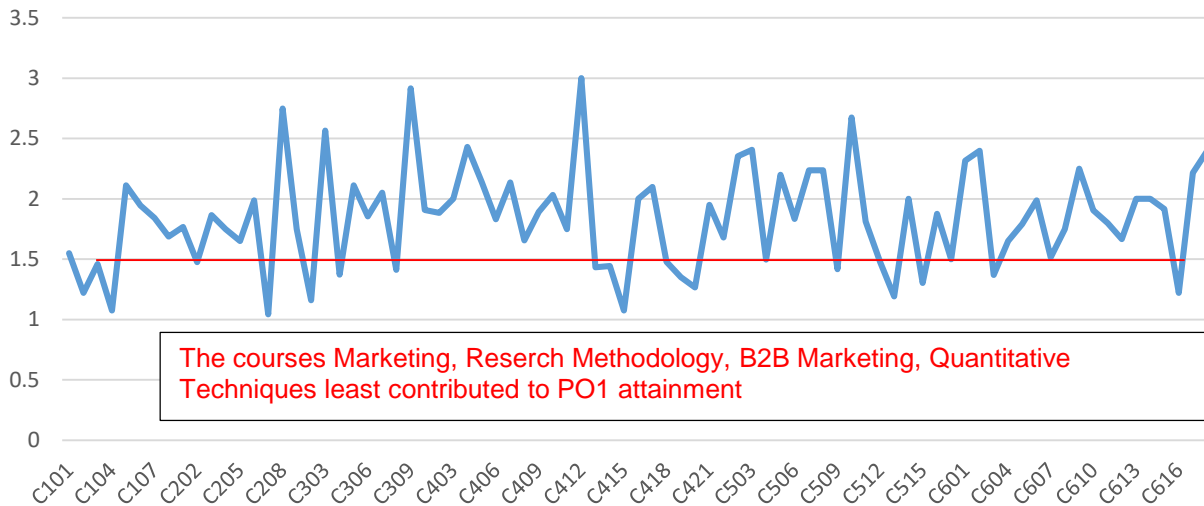


2019-21 Academic Year

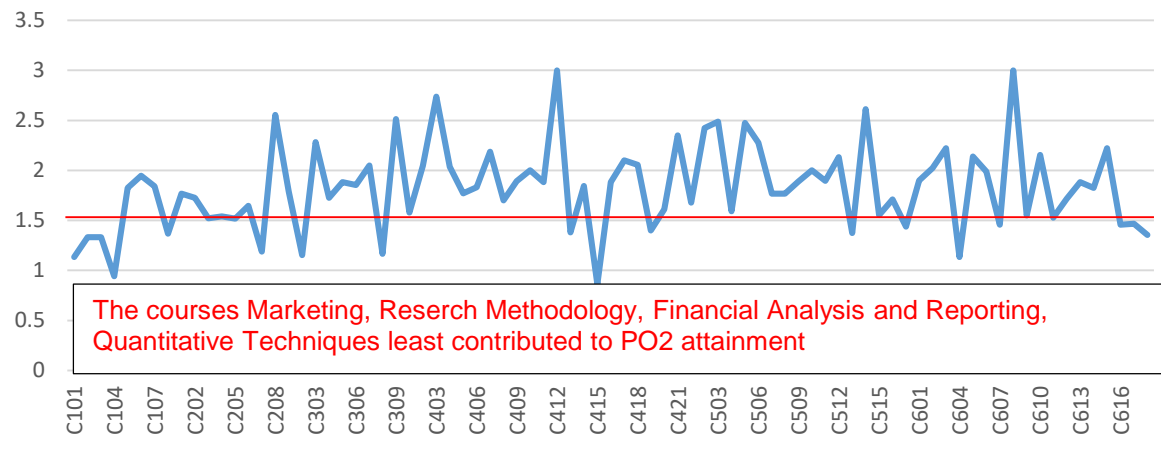
2019-21- Overall PO Attainments



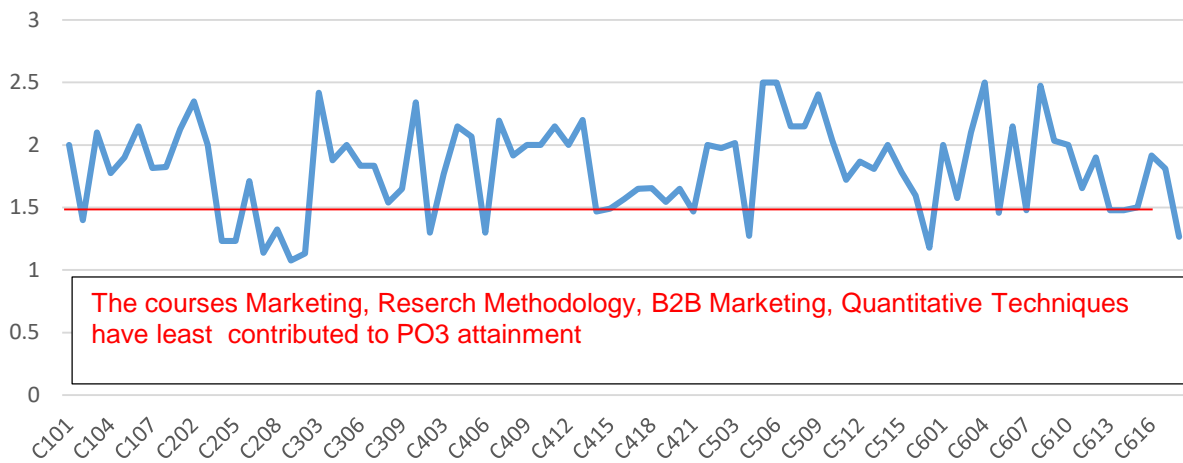
2019-21 - PO1 Attainment



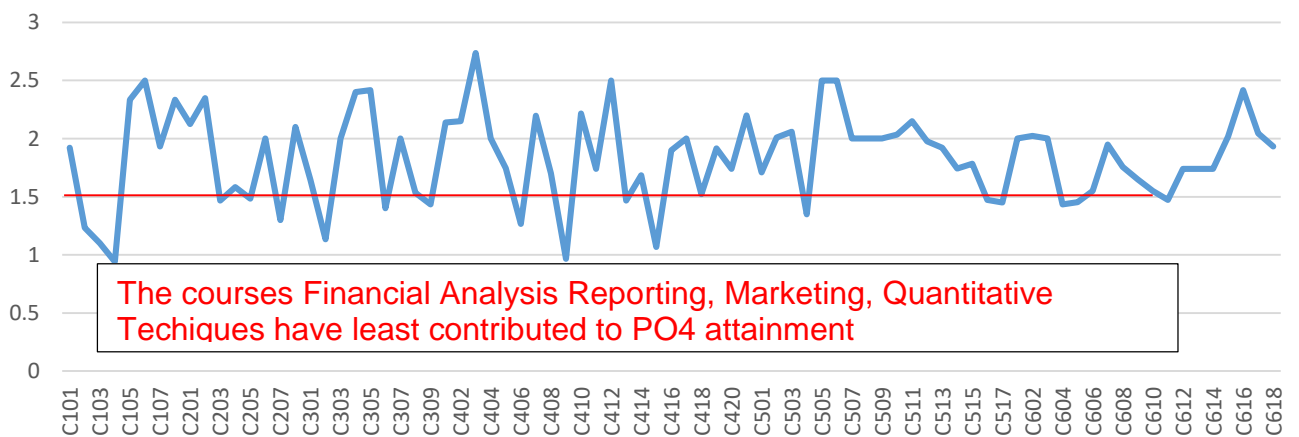
2019-21 - PO2 Attainment

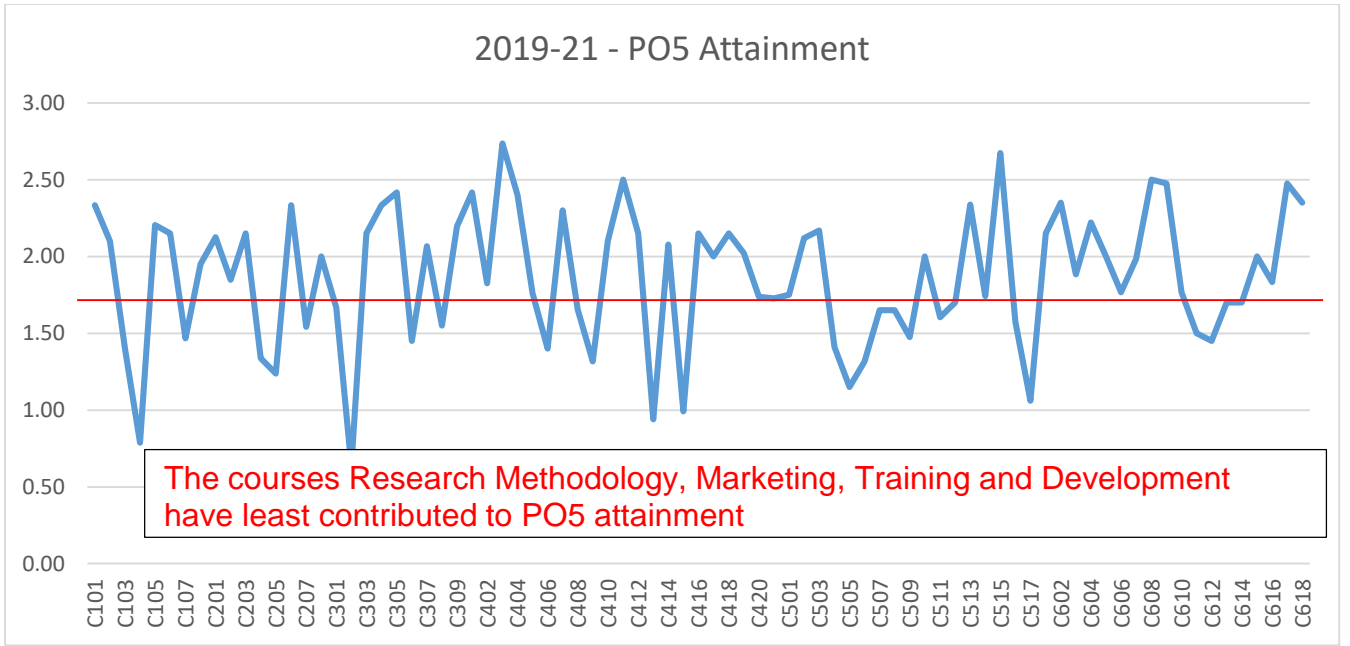


2019-21 - PO3 Attainment

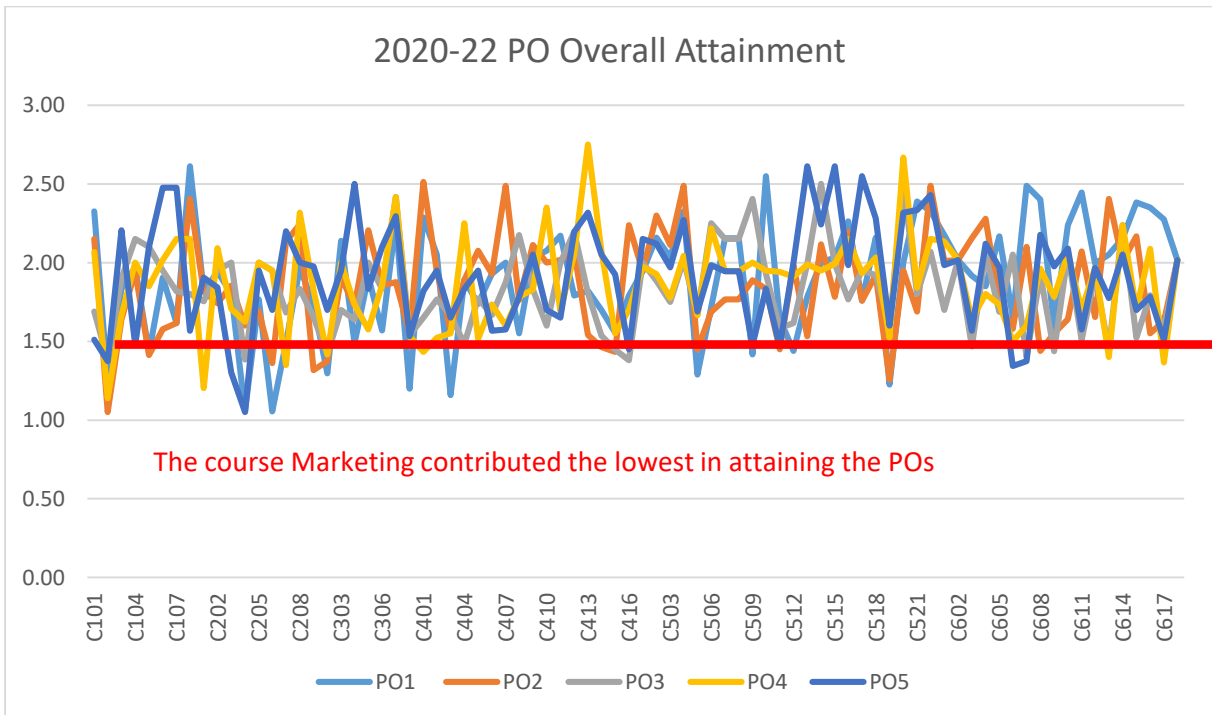


2019-21 - PO4 Attainment

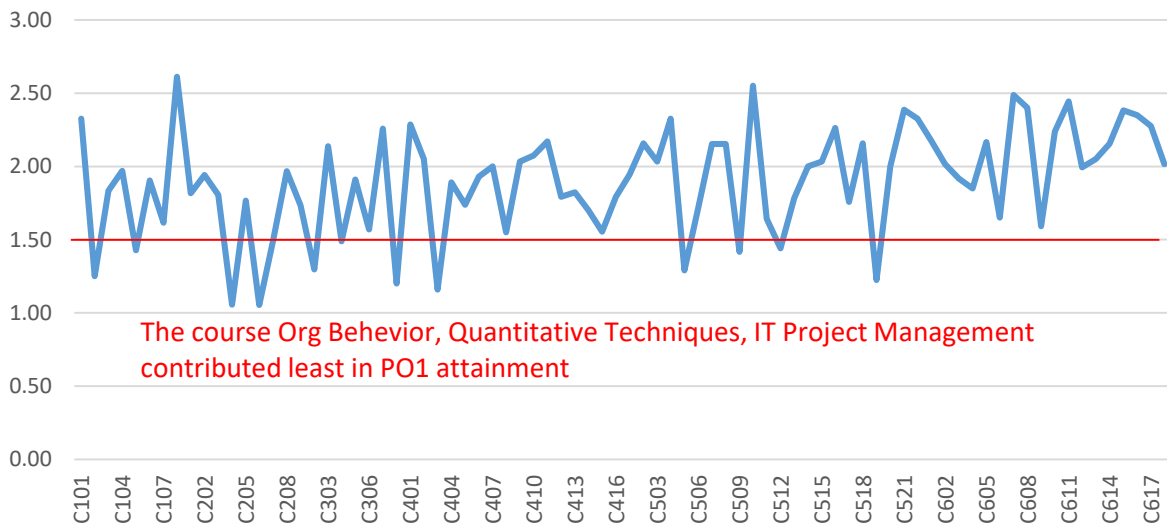




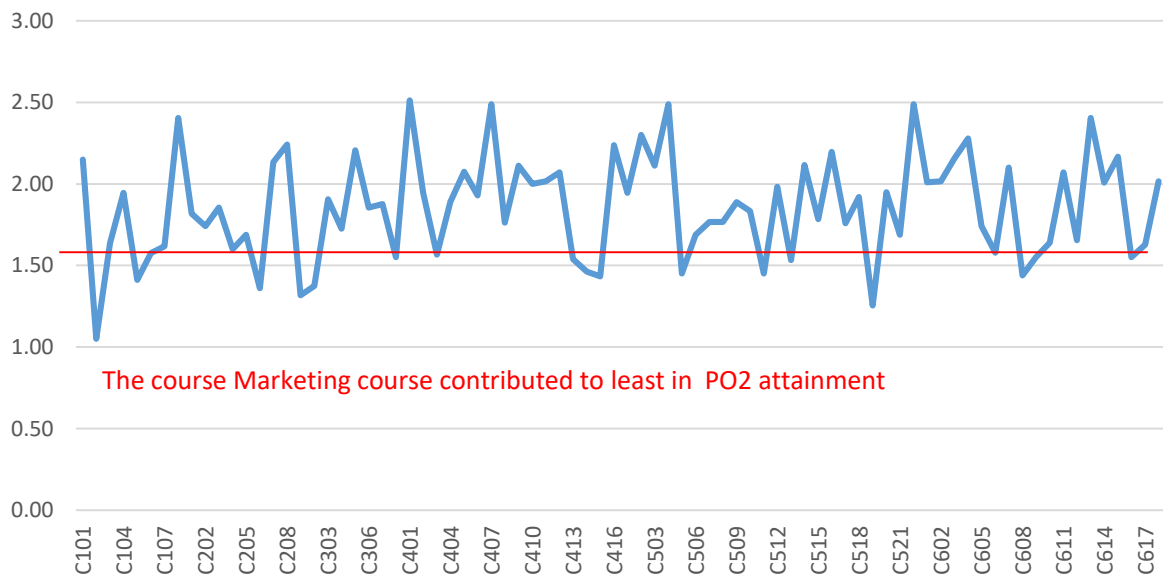
2020-22 Academic Year



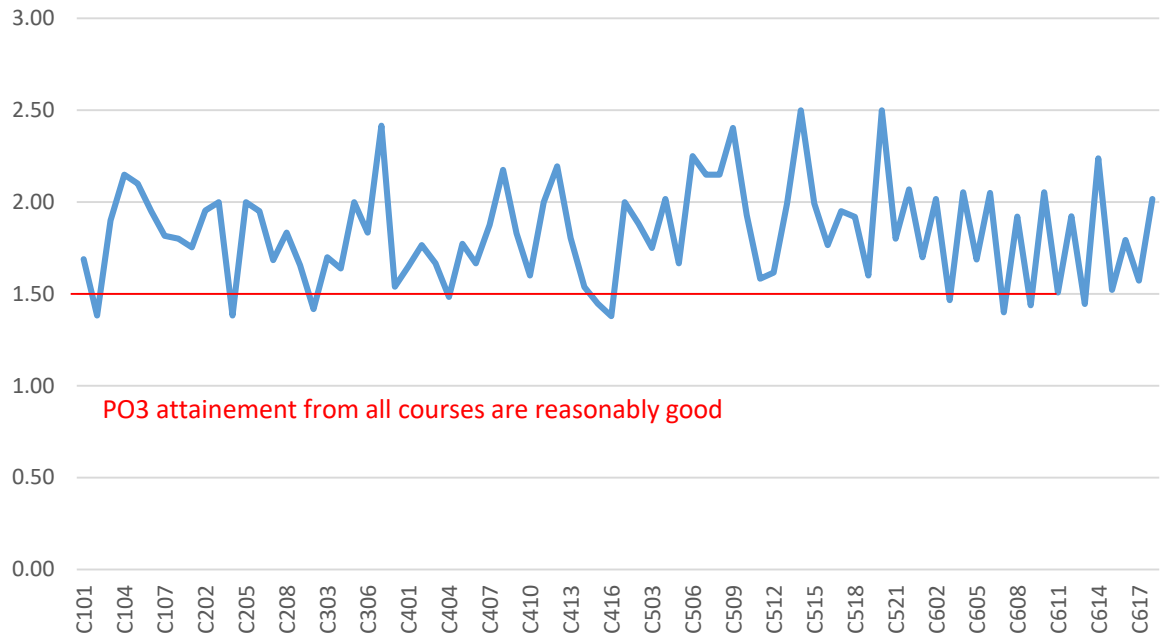
2020-22 - PO1 Attainment



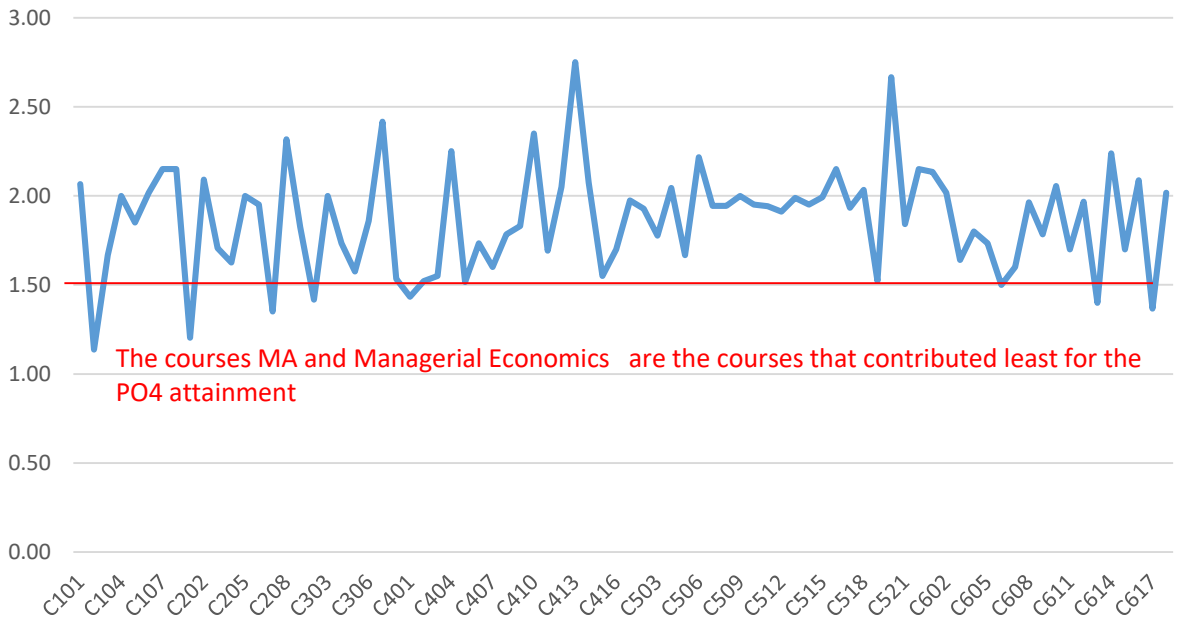
2020-22 - PO2 Attainment



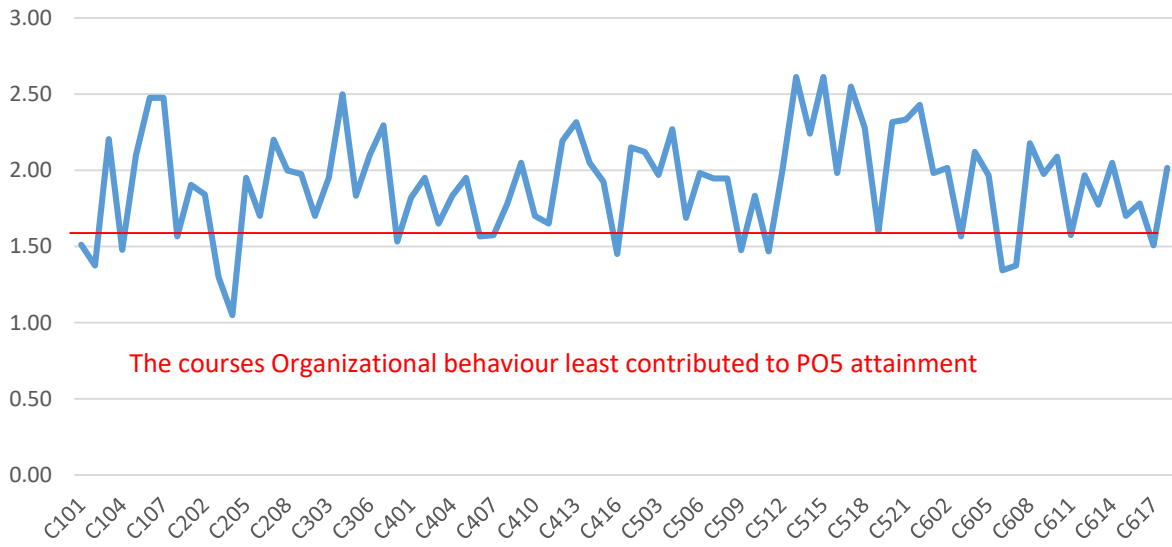
2020-22 - PO3 Attainment



2020-22 - PO4 Attainment



2020-22 - PO5 Attainment



Actions taken

PO	PO Details	Target	Attainment	Gap	Action Taken
PO1	Apply knowledge of management theories and practices to solve business problems	65.00%	64.00%	-1.00%	<ul style="list-style-type: none"> • Increase HBS case study implementation • Curriculum review along with Academia, Industry experts • Increase in Library hours to every student • External Speakers from Industry • Introduce new teaching pedagogy like role play, simulation to improve upon application and Analysis of theories
PO2	Foster Analytical and critical thinking abilities for data-based decision making	65.00%	62.47%	-2.53%	<ul style="list-style-type: none"> • Business Analytics fundamentals core for all • HBS Case mandated - 6-8 • 4 Analytics courses added newly. HR Analytics, Marketing Analytics, Operations Analytics and Financial Analytics added • Cases development by faculty
PO3	Ability to develop Value based Leadership ability	65.00%	63.13%	-1.87%	<p>Following Courses mandated for all</p> <ul style="list-style-type: none"> • Learning Circle • Contemporary Business • Environment • Presentation Skills • Effective written communication • Leadership in Action • Entrepreneurship • Business Ethics <p>Introduced case studies on Leaders who had distinguished themselves in the field of value-based leadership</p>

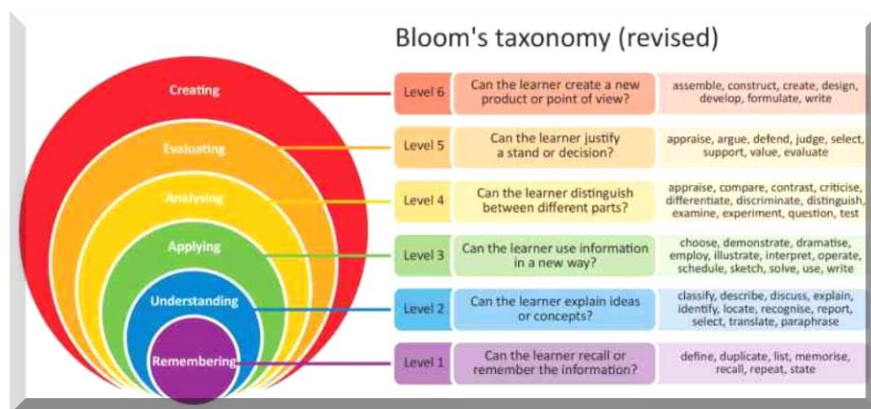
PO4	Ability to understand, Analyse and communicate global, economic, legal, and ethical aspects of business	65.00%	64.47%	-0.53%	<p>Strengthened the following Courses</p> <ul style="list-style-type: none"> • International Business • International Finance • Cross Cultural Management • Business, Environment and Society • SUPA <p>The following additional courses introduced</p> <ul style="list-style-type: none"> • Technology Trends- which includes Artificial Intelligence, IoT, Machine Learning, Cloud, Blockchain and other emerging technologies. • IoT lab created for live experiments
PO5	Ability to lead themselves and others in the achievement of organizational goals, contributing effectively to a team environment	65.00%	67.00%	2.00%	<p>Courses revised</p> <ul style="list-style-type: none"> • Leadership in Action • Entrepreneurship • • Introduced group discussion, Group assignment, Case study discussion, Role play to improve the teamwork. <p>All the students were asked to prepare a journal article and publish them during the fifth /sixth term.</p>

3.2. COURSE OUTCOMES (50)

3.2.1. Describe the assessment tools and processes used to gather the data upon which the evaluation of Course Outcome is based (10)

Describe different assessment tools (semester end examinations, mid-semester tests, laboratory examinations, case studies, mini projects, minor projects, major projects, seminars, presentations, observation record, analysis of plans, reports, projects, outcome of role play and discussion and study report, student portfolios etc.) to measure the student learning and hence attainment of course outcomes. (Student portfolio is a collection of artifacts that demonstrate skills, personal characteristics and accomplishments created by the student during study period.) The process adopted to map the assessment questions, parameters of assessment rubrics etc. to the course outcomes to be explained with examples. The process of data collection from different assessment tools and the analysis of collected data to arrive at CO attainment levels need to be explained with examples.

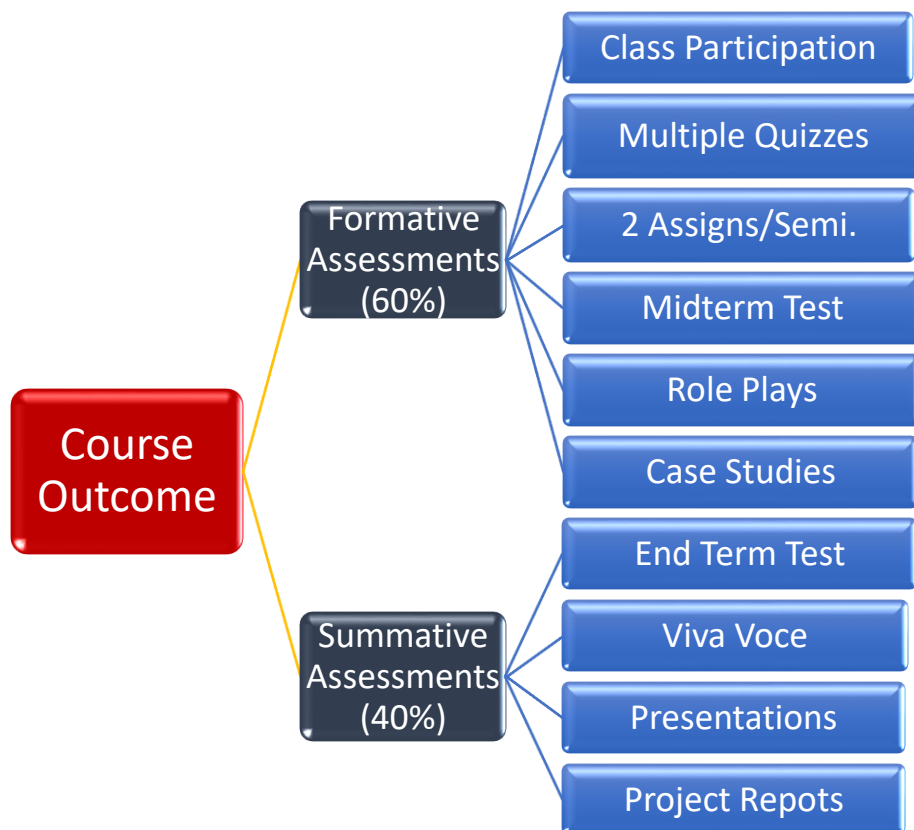
Course Outcomes (CO) for each course are formulated by the faculty concerned before starting the classes. While framing CO the Faculty members try to create COs after having considered Blooms Revised Taxonomy.



Picture taken from Niall McNulty article

As far as possible every CO will be framed in such a way to develop critical and higher order thinking from students. The COs are communicated by the faculty to the students in one of the first few sessions itself. The students are also given a fairly good understanding of the Outcome assessments. Course Outcomes are measured directly through different assessment methods as listed below. Since COs are directly assessed they are also stated in the assessment tool along with the questions. This helps the students to answer questions more effectively. If the questions are mapped

to more than one CO, the marks will be awarded to multiple COs as stated in the assessment tool.



Deciding on CO Attainment Levels

COs are developed by individual faculty members. The attainment levels are also decided by individual faculty on the basis of discussions conducted under the leadership of Area Head. When different faculty members take the same course for different batches they sit together and develop appropriate COs. Also they together decide on attainment levels.

In order to determine the attainment levels, the faculty collect data from the previous batches, the CGPA of the existing students and the report about their performance in the previous semesters etc.

Assessment tools used at XIME Bangalore and their respective weightages in the final evaluation of Course outcome

Assessment		Weightage %	CO attainment
Type	Tools		

Continuous Assessment 65%	Mid Term Exam	Written Mid-Term (WMT)	25	0.25 x WMT
	End Term Exam	Written End Term (WET)	40	+ 0.40 x WET
Internal Assessment 35%	Assignments/ Quizzes	Written/ Oral Internal Assessment (WIA)	35	+ 0.35 x WIA
	Projects			
	Presentations			
	Seminars			
	Case Study			
	Role play			
	Attendance & Class Participation			
Total			100	

Method of Calculation of Course Outcome Attainments (40)

XIME ensures that attainment of each CO is assessed multiple times. This gives students to improve their performance. In order to do that the Institute has (a) Continuous Assessment method (b) Mid-Term and (c) End- Term examination. Mid-Term examination carries 25% of weightage and End- Term examination carries 40% of weightage. The Continuous Assessment consists of the following

- i) Written Assignment
- ii) Quizzes
- iii) Case Studies
- iv) Role plays
- v) Mini Projects
- vi) Attendance & Class Participation
- vii) Presentations and
- viii) Seminars

The below table shows the method of calculating CO attainment. As the first step the marks obtained for CO from all assessments are brought down to out of three.

Therefore, assume that the average attainment for CO1 for Managerial Economics Course in Mid-Term =2/3, End-Term=2/3 and Internal Assessment =2.5/3. The Mid-Term, End-term and Internal Assessment CO1 attainments are multiplied with weightage of 25%, 40% and 35% respectively.

Example of Calculation of CO1 Attainment Level of a Course

Tools	Assigned Weightage	Tools Attainment level	CO1 Attainment Calculation	CO1 Attainment
Mid Term	0.25 (25%)	2	0.25 x 2	0.50
End Term	0.40 (40%)	2	0.40 x 2	0.80
Internal Assessment	0.35 (35%)	2.5	0.35 x 2.5	0.875
CO1 Attainment Overall (0.50+0.80+0.87)				2.17

3.2.2. Record the attainment of Course Outcomes of all courses with respect to set attainment levels (40)

Program shall have set Course Outcome attainment levels for all courses. (The attainment levels shall be set considering average performance levels in the university examination or any higher value set as target for the assessment years. Attainment level is to be measured in terms of student performance in internal assessments with respect to the Course Outcomes of a course in addition to the performance in the University examination)

The institution has a continuous evaluation system wherein the students are evaluated under various components. The components of evaluation and weightage for each component are set out provided below:

Student Evaluation Components of Evaluation

Type	Component	%
Continuous Assessment	Attendance & Class Participation	5
		10

	Assignment / Quiz	20
Examinations	Mid- Term Exam	25
	End- Term Exam	40
Total		100

As part of the continuous assessments students are given challenging assignments which include review of research articles, field work, writing of journal, etc. The number of internal assessment tests to be conducted along with their weightages are presented in a course plan and approved by the department at the beginning of the course in a term. The levels of attainment are determined based on the past data of the previous batches and also based on CGPA of the batch concerned from the previous examinations.

CO Attainment level computation

Three levels of CO attainment targets are fixed by the faculty at the beginning of the trimester. They are Level -1, Level- 2 and Level -3. Level-1 is the lowest and Level-3 is the highest target level. The faculty based on the performance of students in the previous batch and also the performance details of the students concerned, fixes three targets of achievement at the beginning. At the end of the term, CO attainment calculations will be made. The faculty will then examine the attainment level of the batch and also will also analyse the attainment levels of different students.

Step 1: Assigning CO's and Assessments

All the questions of the assessment tools like Mid- Term, End-Term, Quiz, and assignments are mapped with CO's of the course. There can also be questions that are mapped to more than one Course Outcome. If one question is mapped to more than one Course Outcome, the proportionate division of marks are also shown in the question paper. A sample mid-term exam CO attainment template is shown in the table.

Mid-term exam template with COs mapping

.	n	n
Qn	n	n	n	n	n	n	n	n	n

As is shown in the tables above, the CO attainments from different assessments will be taken to calculate the attainment of final attainment of each CO. For this purpose, the weighted average of marks against each CO is taken and calculated out of 3.

Step 2: Calculation of CO

After calculating the Course Outcome attainment for the entire COs as per the method shown in the Step 1. The weighted average of COs to be calculated as shown in table below. The below table assumes that the average CO1 attained in Internal Assessments is 3.0, Midterm =1 and End-Term=2. Similarly, for CO2, CO3 and so on.

Weighted average COs attainment calculation

	CO1	CO2	CO3	CO4
Average of CO's attained in Assignment, Class Presentation and Quizzes and other internal assessments (Weightage=0.35)	3.0	3.0	3.0	
Average of CO's attained in Mid-Term (Weightage=0.25)	2.0	2.0	3.0	2.0
Average of CO's attained in End-Term (Weightage=0.40)	2.0	3.0	1.0	2.0
Weighted Average of CO's attained	2.35	2.75	2.2	1.3

Weighted Average is calculated for CO1 $= 3*(0.35) + 2*(0.25) + 2*(0.4)$
 $= 1.05 + 0.50 + 0.8$
 $= \mathbf{2.35}$

Weighted Average is calculated for CO2 $= 3*(0.35) + 2*(0.25) + 3*(0.4)$
 $= 1.05 + 0.50 + 1.2$
 $= \mathbf{2.75}$

Weighted Average is calculated for CO3 $= 3*(0.35) + 3*(0.25) + 1*(0.4)$

$$= 1.05+0.75+0.4$$

$$= \mathbf{2.2}$$

Weighted Average is calculated for CO4

$$= 2*(0.25) + 2*(0.4)$$

$$= 0.50+0.8$$

$$= \mathbf{1.3}$$

Step 3: CO attainment Level Calculation

At the end of the trimester, CO attainment level of the batch is calculated against the three levels of attainment which was fixed by the faculty at the beginning of the term. As an example let us assume that for a particular course the faculty has assumed the following three levels of attainment for his/her course.

- 50 to 60 % of the students scoring more than 60% marks out of the relevant maximum marks. (Level 1)
- Between 60 to 70 % of the students scoring more than 60% marks out of the relevant maximum marks. (Level 2)
- More than 70% of the students scoring more than 60% marks out of the relevant maximum marks. (Level 3)

The table below gives the CO attainment levels as per the achievement of the batch.

CO Attainment	CO1	CO2	CO3	CO4	CO5
No of Students above 60%	91	135	116	135	39
Percentage of students above 60%	51%	75%	65%	75%	22%
Attainment Level	1	3	2	3	Not Attained

CO attainment is measured in terms of actual percentage of students getting the targeted percentage of marks. If the targets are achieved for all the course outcomes, then the outcomes for that course are attained for that year. If the targets are not achieved, corrective actions are taken to bridge the gap of achievement. The faculty concerned try to bridge the gap in two ways (a) During the course itself (b) After the course.

When the faculty finds that the targets are not being achieved during the continuous assessments, additional study materials are provided to students. E.g. Videos, other reference books. Also tutorials are taken if necessary.

After the course, the attainment of CO is bridged through extension lectures and talks by experts from the industry. However, the contribution to each CO attainment is not measured after these types of activities.

Actual Course Outcome Attainment for the Assessment Years

The actual attainment of COs for the assessment period (from 2018 to 22) are given the tables below.

AY 2018-20 CO Attainment

Course	CODE	CO1	CO2	CO3	CO4	CO5
ABA	C612	38.02%	72.92%	68.23%	72.66%	4.69%
AM	C503	57.33%	76.00%	78.67%	80.00%	20.00%
ASP	C504	78.16%	95.40%	100.00%	93.10%	37.93%
B2B	C404	47.67%	67.67%	71.00%	58.50%	14.00%
BA	C307	46.44%	66.47%	73.22%	64.45%	17.34%
BAE	C405	64.33%	85.33%	99.33%	78.00%	21.00%
BDA	C505	65.93%	85.19%	78.52%	87.78%	20.00%
BE	C501	74.85%	95.41%	98.80%	84.43%	32.34%
BL	C308	34.30%	61.66%	71.87%	71.10%	10.40%
BF	C605	58.70%	85.51%	93.48%	84.78%	34.78%
BGS	C107	51.20%	83.98%	88.03%	87.85%	20.56%
BS	C401	47.33%	78.33%	84.00%	80.00%	20.00%
CB	C406	36.33%	64.33%	66.67%	55.00%	3.00%
CBE	C207	48.00%	71.33%	67.33%	68.00%	55.00%
CBE	C402	62.00%	85.33%	90.67%	87.00%	29.00%
CBM	C506	63.16%	82.46%	92.11%	73.68%	42.11%
CCM	C613	64.07%	87.43%	94.21%	85.33%	29.34%
CEIS	C303	47.59%	74.57%	84.78%	77.75%	21.97%
CF	C304	56.26%	78.42%	81.89%	76.88%	21.97%
CI	C606	47.75%	74.77%	83.78%	77.03%	37.84%
CM	C507	83.33%	96.88%	96.88%	98.44%	81.25%
CMA	C206	44.33%	72.33%	75.67%	78.00%	22.00%
CRM	C508	97.85%	100.00%	100.00%	100.00%	98.39%
DM	C407	83.33%	99.00%	100.00%	98.50%	88.00%
DM	C509	60.53%	81.58%	79.82%	71.05%	13.16%
DTR	C614	65.81%	82.05%	91.45%	76.92%	0.00%
ENT	C403	52.00%	74.33%	84.00%	76.00%	14.00%
ERP	C408	86.67%	98.67%	98.67%	100.00%	52.00%

EWC	C104	38.55%	63.69%	71.32%	64.53%	20.11%
FAR	C106	72.78%	82.59%	78.52%	80.83%	20.56%
FD	C510	45.83%	63.89%	68.06%	50.00%	0.00%
FIS	C607	44.79%	80.21%	76.04%	84.38%	37.50%
FM	C409	38.33%	66.67%	65.67%	58.50%	12.00%
FSM	C602	83.91%	94.83%	92.53%	100.00%	27.59%
HRM	C305	74.18%	87.86%	98.07%	91.04%	79.19%
IAPM	C511	61.11%	88.10%	94.44%	96.43%	57.14%
IB	C502	47.34%	76.13%	85.60%	79.59%	27.81%
IBFS	C410	90.33%	100.00%	98.33%	97.50%	33.00%
IF	C615	40.74%	66.67%	74.07%	58.33%	11.11%
IOT	C512	71.50%	88.41%	96.62%	89.86%	34.78%
IRLL	C411	60.00%	73.33%	82.33%	70.00%	53.00%
ISM	C412	59.33%	79.67%	93.00%	78.50%	26.00%
IT	C603	48.48%	68.40%	77.06%	59.74%	5.19%
ITPM	C413	45.67%	66.33%	81.00%	62.50%	23.00%
KM	C604	50.52%	65.63%	80.21%	57.03%	9.38%
LA	C608	39.32%	64.87%	70.46%	69.46%	9.58%
LCT1	C105	57.04%	78.52%	82.41%	75.00%	26.11%
LSS	C414	95.33%	97.67%	100.00%	100.00%	57.00%
MAR	C103	58.20%	79.01%	86.00%	75.97%	37.57%
MARK	C415	64.00%	84.00%	84.00%	75.00%	8.00%
MARK 2	C205	61.00%	83.33%	86.67%	85.50%	52.00%
ME	C102	45.44%	66.48%	61.82%	72.35%	33.52%
ME	C302	63.64%	85.23%	88.83%	87.78%	42.05%
ME 2	C204	46.33%	74.00%	74.00%	73.50%	10.00%
MIB	C416	84.00%	98.00%	97.33%	98.50%	49.00%
MOPS	C208	52.33%	66.00%	63.00%	54.00%	24.00%
MR	C601	21.35%	40.10%	44.27%	38.28%	3.13%
OB	C101	64.25%	75.05%	71.14%	68.16%	21.79%
OB 2	C203	63.00%	90.33%	89.67%	88.00%	32.00%
OPD	C513	49.12%	77.19%	63.16%	78.95%	26.32%
PBM	C514	74.58%	98.31%	96.61%	98.31%	40.68%
PGL	C609	80.30%	90.91%	90.91%	86.36%	63.64%
PM	C417	30.67%	75.00%	69.33%	83.50%	29.00%
PM	C515	41.67%	72.73%	81.82%	68.18%	15.91%
PPC	C610	84.95%	99.46%	97.85%	94.35%	29.03%
PS	C202	63.67%	85.33%	92.00%	83.50%	34.00%
QT	C108	47.22%	64.63%	73.70%	62.50%	25.00%

QT 2	C201	37.33%	64.00%	63.00%	67.50%	12.00%
RDBMS	C418	79.00%	89.00%	94.33%	86.50%	70.00%
RM	C301	37.96%	68.59%	67.63%	71.68%	10.98%
RM	C611	35.82%	48.76%	69.65%	29.10%	0.00%
RTL	C516	75.49%	99.02%	96.08%	100.00%	41.18%
SCM	C419	84.33%	95.67%	99.00%	91.00%	32.00%
SDM	C420	97.33%	100.00%	100.00%	100.00%	88.00%
SFVC	C517	69.37%	89.19%	83.78%	89.19%	18.92%
SOIM	C518	93.52%	98.15%	100.00%	98.61%	88.89%
SOPS	C306	85.36%	94.22%	90.17%	92.20%	27.75%
T&D	C421	91.33%	98.67%	98.67%	98.00%	63.00%
TM	C422	93.67%	99.00%	99.00%	100.00%	48.00%
TQM	C519	47.06%	80.39%	88.24%	97.06%	47.06%
VCPE	C520	91.67%	CO2	100.00%	98.44%	71.88%

AY 2019-21 CO Attainment

Course	CODE	CO1	CO2	CO3	CO4	CO5
ABA	C514	25.71%	81.90%	74.29%	87.14%	0.00%
AM	C611	42.22%	76.67%	75.56%	76.67%	20.00%
ASP	C612	61.90%	84.13%	97.22%	89.29%	23.81%
APD	C301	45.66%	65.32%	69.56%	66.76%	14.45%
B2B	C415	28.46%	61.80%	64.79%	50.56%	13.48%
BA	C305	66.67%	83.96%	89.37%	86.49%	41.08%
BAE	C419	73.33%	86.19%	98.57%	83.57%	95.71%
BDA	C510	47.33%	73.11%	80.11%	71.82%	14.92%
BE	C509	47.94%	83.15%	81.27%	83.71%	26.97%
BL	C303	58.02%	84.50%	88.47%	85.14%	29.73%
BGS	C106	65.95%	92.11%	93.91%	90.86%	19.89%
BS	C402	54.14%	82.50%	86.00%	81.22%	29.28%
CB	C414	48.10%	71.90%	80.48%	65.00%	15.71%
CBE	C205	75.14%	91.71%	93.15%	88.11%	56.76%
CCM	C610	69.98%	92.63%	97.05%	91.44%	34.81%
CEIS	C304	44.68%	75.14%	81.26%	72.16%	19.46%
CF	C309	80.18%	90.81%	92.79%	89.73%	43.78%
CM	C513	80.00%	98.67%	94.67%	96.00%	20.00%
CMA	C203	68.29%	85.77%	84.32%	77.30%	19.46%
CRM	C508	75.00%	99.17%	93.33%	96.25%	15.00%
DBMS	C418	73.81%	85.71%	95.24%	91.07%	39.29%

DM	C417	100.00%	100.00%	100.00%	100.00%	100.00%
DM	C613	95.24%	100.00%	100.00%	100.00%	35.71%
DTF	C602	64.91%	80.70%	96.49%	78.95%	26.32%
ENT	C401	63.37%	84.07%	91.76%	86.54%	20.33%
ERM	C515	44.63%	63.84%	70.06%	56.78%	6.78%
ERP	C413	40.48%	54.76%	66.67%	42.86%	21.43%
EWC	C105	70.11%	86.41%	99.46%	86.96%	41.30%
FAR	C102	41.30%	59.96%	65.04%	55.98%	17.39%
FD	C614	87.88%	98.48%	95.45%	100.00%	59.09%
FIS	C606	96.49%	98.25%	98.25%	97.37%	73.68%
FM	C407	67.54%	69.30%	87.72%	53.95%	63.16%
HRM	C306	53.87%	72.61%	78.20%	66.76%	44.32%
IAPM	C502	71.93%	86.84%	93.86%	86.84%	44.74%
IB	C512	72.36%	95.53%	91.87%	92.68%	13.41%
IBS	C403	92.31%	97.44%	100.00%	92.31%	69.23%
IF	C615	77.19%	96.49%	98.25%	94.74%	36.84%
IRLL	C408	69.05%	80.95%	97.62%	82.14%	21.43%
ISM	C421	56.67%	70.00%	78.33%	60.00%	15.00%
ITPM	C420	49.25%	83.08%	88.06%	81.34%	16.42%
ITS	C607	46.22%	74.67%	80.89%	76.67%	2.67%
KM	C608	72.41%	90.80%	96.55%	93.10%	41.38%
LA	C605	70.53%	86.74%	93.37%	85.08%	38.12%
LC	C101	55.74%	76.67%	79.26%	76.11%	25.00%
LOT	C511	72.07%	90.99%	82.88%	86.49%	10.81%
LSS	C412	45.45%	93.94%	93.94%	90.91%	9.09%
LSS	C507	69.24%	94.84%	96.69%	93.37%	17.13%
MAR	C104	38.22%	57.79%	64.49%	51.90%	11.41%
MARE	C410	85.19%	90.74%	98.15%	90.28%	77.78%
MARK 2	C206	36.76%	61.80%	60.36%	50.00%	5.95%
ME	C103	53.26%	77.72%	86.78%	71.20%	18.48%
ME	C201	60.72%	78.74%	81.62%	73.51%	12.43%
ME	C308	52.25%	74.59%	65.95%	70.27%	47.57%
MIB	C409	69.57%	76.81%	95.65%	67.39%	56.52%
MM	C616	73.85%	88.21%	94.48%	86.74%	30.39%
MOPS	C208	81.44%	93.15%	95.86%	89.73%	57.30%
MR	C603	73.33%	90.91%	96.36%	94.55%	30.91%
OB	C108	58.02%	77.30%	85.59%	79.73%	34.05%
OB	C204	40.90%	64.32%	72.61%	63.51%	17.84%
OPD	C501	62.96%	88.89%	83.95%	79.63%	7.41%

PBM	C505	66.67%	97.44%	96.15%	98.08%	11.54%
PGL	C609	61.70%	95.04%	92.20%	91.49%	59.57%
PM	C404	93.16%	99.15%	99.15%	100.00%	94.87%
PM	C504	45.88%	85.66%	84.59%	88.71%	15.05%
PPC	C601	71.79%	84.62%	86.32%	76.92%	30.77%
PS	C202	64.32%	87.75%	93.87%	79.73%	27.57%
QT	C107	62.88%	76.40%	78.38%	65.95%	21.08%
QT 2	C207	44.68%	71.35%	74.05%	65.95%	8.65%
RM	C302	36.22%	44.14%	50.99%	21.62%	1.08%
RM	C604	73.16%	88.31%	92.64%	87.01%	38.96%
RTL	C506	93.88%	100.00%	100.00%	99.49%	88.78%
SCM	C411	81.11%	94.44%	100.00%	88.33%	36.67%
SDM	C416	96.25%	100.00%	100.00%	100.00%	95.51%
SFVC	C503	71.43%	90.48%	91.43%	85.71%	45.71%
SOPS	C307	75.14%	88.29%	98.56%	82.70%	51.35%
T&D	C406	57.97%	81.16%	69.57%	82.61%	21.74%
TAX	C617	59.35%	85.37%	89.43%	84.15%	17.07%
TM	C405	69.79%	88.54%	100.00%	81.25%	65.63%
VCPE	C618	66.67%	85.33%	97.33%	84.00%	32.00%

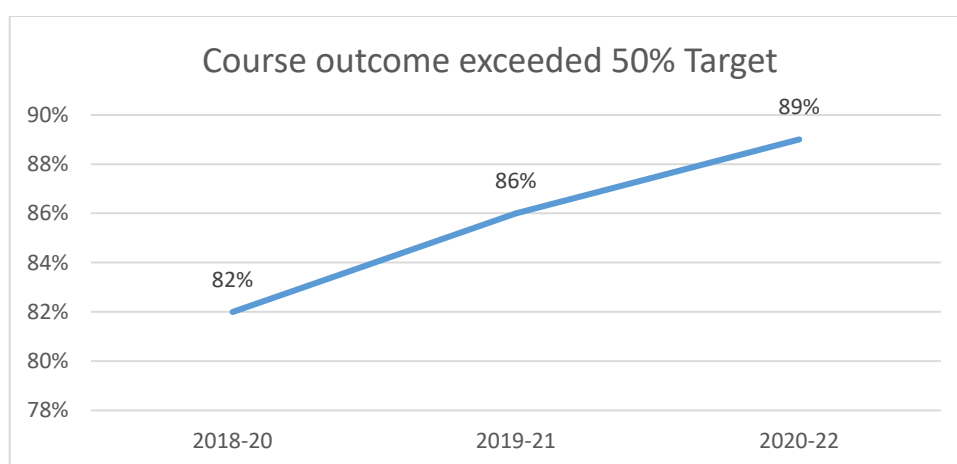
AY 2020-22 CO Attainment

Course	CODE	CO1	CO2	CO3	CO4	CO5
ABAF	C611	78.79%	86.36%	96.97%	81.82%	59.09%
AGM	C512	82.27%	92.91%	97.87%	92.55%	38.30%
ASP	C509	27.45%	42.65%	37.25%	56.62%	26.47%
APD	C301	45.81%	65.74%	70.20%	67.32%	13.97%
BA	C305	66.85%	84.05%	89.43%	86.56%	41.40%
BE	C503	65.69%	81.37%	92.16%	69.12%	41.18%
BL	C303	58.02%	84.50%	88.47%	85.14%	29.73%
BGS	C104	69.83%	86.03%	99.44%	86.59%	40.78%
C&I	C615	71.11%	93.33%	95.56%	96.67%	60.00%
CBE	C207	44.13%	70.76%	73.56%	65.36%	8.94%
CBM	C617	55.56%	77.78%	74.60%	76.19%	52.38%
CCIOTAI	C510	74.27%	90.06%	98.83%	92.11%	49.12%
CCM	C601	83.52%	95.79%	97.32%	94.54%	43.10%
CEIS	C304	44.68%	75.14%	81.26%	72.16%	19.46%
CF	C309	80.63%	91.06%	93.11%	89.94%	44.69%
CMA	C203	67.41%	85.47%	83.80%	76.54%	18.99%

CMP	C520	61.73%	81.48%	93.83%	87.04%	14.81%
CRM	C614	71.95%	84.82%	97.36%	79.70%	4.95%
DM	C412	58.33%	79.17%	89.58%	71.88%	18.75%
DMNG	C513	77.78%	91.11%	100.00%	91.67%	53.33%
DT	C616	55.56%	91.36%	86.42%	90.74%	33.33%
ENT	C414	44.06%	62.45%	72.41%	69.83%	21.26%
ERMI	C613	82.54%	100.00%	100.00%	97.62%	85.71%
ERP	C406	93.94%	98.99%	97.98%	100.00%	81.82%
EWC	C103	39.29%	58.85%	65.36%	53.35%	11.73%
FAR	C105	65.92%	92.18%	93.85%	91.62%	20.67%
FD	C514	79.80%	97.98%	95.96%	92.42%	66.67%
FIS	C610	79.05%	93.33%	90.48%	100.00%	25.71%
FM	C408	69.23%	80.34%	91.45%	78.21%	61.54%
HRM	C306	53.87%	72.61%	78.20%	66.76%	44.32%
IAPM	C515	86.21%	96.55%	97.13%	96.55%	48.28%
IB	C502	77.78%	88.89%	96.30%	86.11%	25.00%
IBA	C618	89.63%	98.52%	100.00%	96.67%	60.00%
IBFS	C411	43.59%	84.62%	89.74%	92.31%	23.08%
IF	C612	38.10%	69.05%	88.10%	67.86%	21.43%
IRLL	C404	37.93%	68.97%	79.31%	77.59%	17.24%
ISM	C511	77.78%	88.89%	97.78%	93.33%	0.00%
ITPM	C402	41.81%	63.45%	69.59%	55.70%	0.88%
ITS	C609	47.99%	83.15%	85.35%	83.52%	10.99%
KM	C506	31.31%	43.43%	62.63%	68.18%	39.39%
LIA	C603	74.71%	91.95%	95.79%	92.53%	39.08%
LSS	C521	91.11%	97.78%	97.78%	100.00%	93.33%
M2	C205	74.30%	91.43%	92.92%	87.71%	55.31%
MAR	C102	70.95%	89.39%	94.60%	85.20%	39.11%
MAR	C409	95.37%	98.15%	97.22%	97.22%	83.33%
ME	C101	53.45%	77.84%	86.59%	70.95%	18.99%
ME	C201	61.45%	78.96%	81.75%	73.46%	12.85%
ME	C308	51.02%	73.74%	64.80%	69.27%	46.93%
MIB	C410	78.43%	94.12%	98.04%	100.00%	52.94%
MM	C605	82.67%	96.00%	99.56%	88.00%	97.33%
MOPS	C208	81.56%	93.30%	95.72%	89.39%	56.42%
MR	C604	79.17%	95.83%	93.75%	96.88%	50.00%
OB	C107	42.27%	61.82%	65.55%	58.66%	17.32%
OB	C204	40.41%	64.25%	72.25%	63.41%	17.88%
PBM	C508	60.14%	76.09%	87.68%	76.09%	60.87%

PGL	C608	78.79%	86.36%	96.97%	81.82%	59.09%
PM	C403	60.42%	78.47%	88.89%	72.92%	27.08%
PM	C505	37.14%	71.81%	75.24%	79.43%	13.71%
PPC	C607	97.92%	100.00%	100.00%	100.00%	96.88%
PS	C202	64.80%	87.90%	94.23%	79.33%	26.26%
QT	C106	58.10%	77.47%	85.29%	79.89%	34.64%
QT2	C206	35.57%	60.52%	59.22%	48.32%	5.59%
RDBMS	C401	89.25%	98.92%	100.00%	96.77%	35.48%
RM	C302	36.22%	44.14%	50.99%	21.62%	1.08%
RM	C507	69.52%	89.33%	89.14%	92.00%	51.43%
RM	C602	90.22%	99.56%	99.56%	98.00%	90.67%
SCM	C407	70.00%	88.00%	92.67%	80.00%	18.00%
SDM	C413	48.67%	74.67%	81.33%	77.00%	18.00%
SHRM	C504	88.10%	96.43%	97.62%	96.43%	53.57%
sop	C108	63.50%	77.09%	78.77%	66.20%	21.23%
SOPS	C307	75.05%	88.27%	98.51%	82.68%	51.96%
SRMR	C519	100.00%	100.00%	100.00%	100.00%	100.00%
SVFS	C516	77.38%	94.05%	98.81%	82.14%	71.43%
T&D	C405	56.67%	95.00%	90.00%	92.50%	5.00%
Tax	C517	77.38%	94.05%	98.81%	82.14%	71.43%
TM	C415	50.96%	74.52%	81.03%	78.74%	27.01%
TMR	C606	36.51%	57.14%	53.97%	83.33%	33.33%
TQM	C518	19.75%	59.26%	62.35%	59.26%	1.85%
TT	C501	70.45%	90.15%	91.67%	86.36%	40.91%

Course Outcome exceeding 50% achievement over 3 batches (2018-22)



Please find CO attainment calculation table in Annexure 6.

